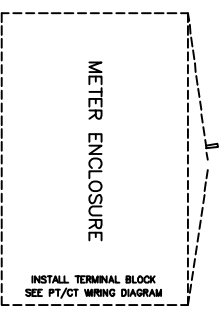
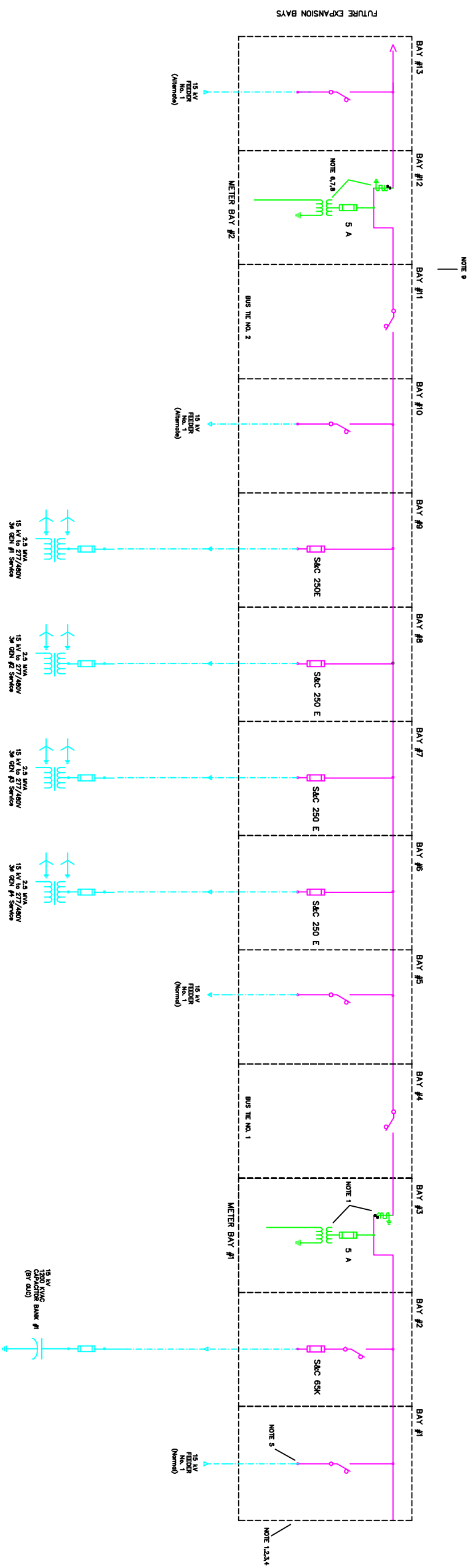
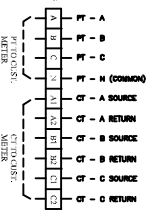


# METAL CLAD SWITCH GEAR (Supplied By Materialman)



- METERING ENCLOSURE SHALL BE AS FOLLOWS**
- 3/4" x 3/4" x 1/4" MINIMUM SIZE
  - 3/4" WOOD BACKBOARD
  - DOUBLE DOOR ACCESS WITH SS LOCK LEVER HANDLE
  - DOOR LOCK TO BE FITTED WITH CHIMP KEY



- NOTES**
- OUTDOOR RINGS SHALL BE QUINCE GREEN - MANSSELL 701329/1/3
  - SWITCHGEAR SHALL BE UL LISTED
  - ALL CABINET HANDLES SHALL HAVE PROVISIONS FOR PADLOCKING
  - PROVISION FOR FUTURE BUS EXTENSION
  - ALL CABLE CONNECTORS SHALL BE DUAL TWO-HOLE NEMA TO ACCOMMODATE UP TO PAR 750 KCMIL
  - (3) CT'S 400.5 MANUFACTURER ABB, K0N-11, #752445613 TO BE SUPPLIED BY MANUFACTURER
  - (3) PT'S 6021 MANUFACTURER ABB, K0N-11, #752442902 TO BE SUPPLIED BY MANUFACTURER
  - 5A FUSE SHALL BE COPPER NX #FANR6V12B02
  - SEE METER ENCLOSURE SPECIFICATIONS

**SWITCHGEAR RATINGS**

**VOLTAGE RATINGS**  
 NOMINAL - 14.4 KV  
 MAX DESIGN - 17 KV  
 BIL - 50 KV

**AMP RATINGS**  
 SWITCH LOAD INTERRUPTING AMPS - 1200A  
 MAIN BUS CONTINUOUS - 1200 A  
 SHORT CIRCUIT SIM - 40000 A  
 SHORT CIRCUIT FULT - 40000 A  
 DUTY CYCLE FAULT CLOSING SIM - 800 MVA  
 MOMENTARY WITHSTAND SIM - 61000 A  
 SHORT TIME (2S) WITHSTAND SIM - 40000 A

NO.	REVISIONS	DATE	GREENVILLE UTILITIES COMMISSION GREENVILLE, NORTH CAROLINA
			VIDANT 6 MW GENERATOR SITE /POD SWGR ONE LINE DIAGRAM
DATE	DATE	DATE	DWG. NO.
08/23/24	08/23/24	08/23/24	1 OF 1

