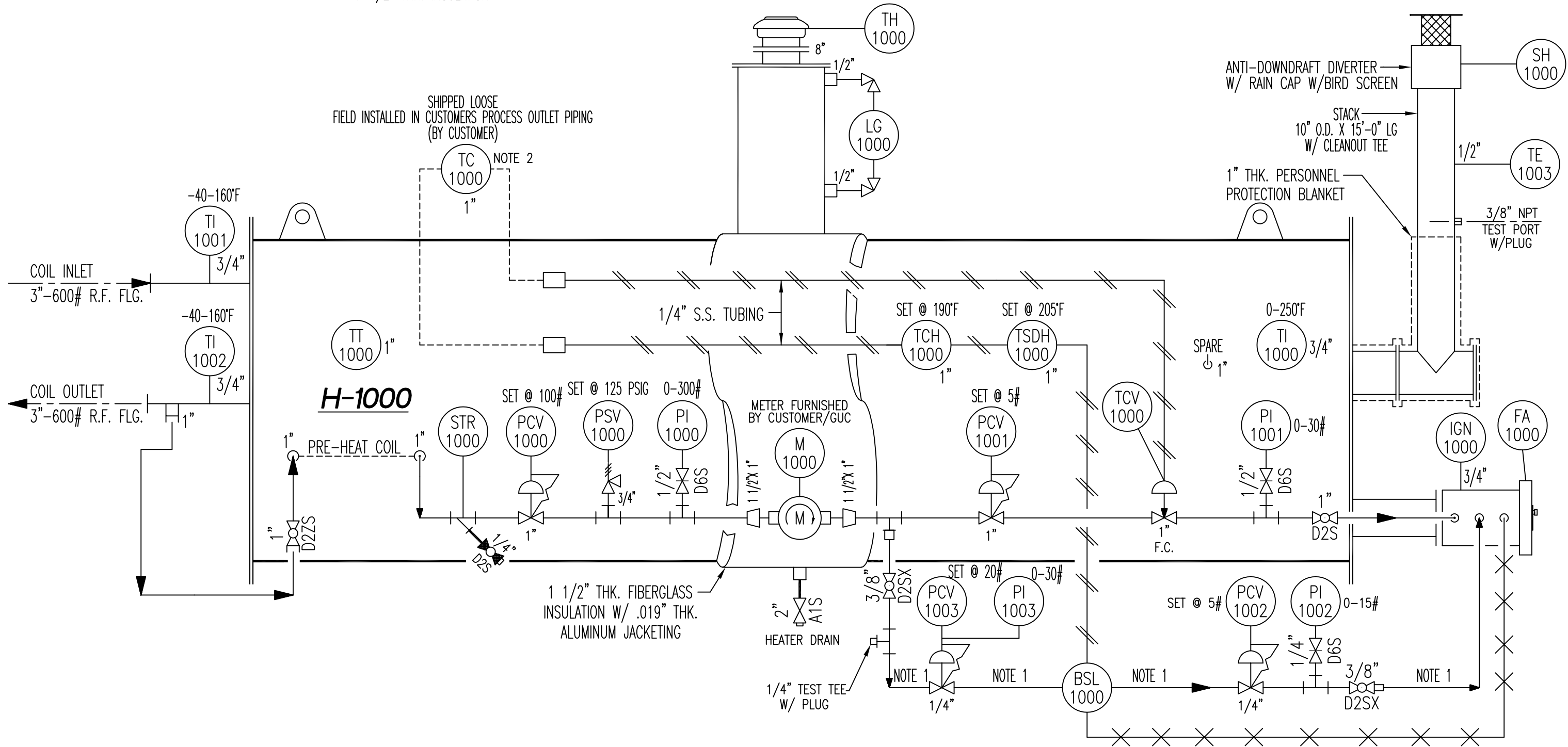


H-1000
 INDIRECT GAS FIRED WATER BATH HEATER
 36" O.D. X 12'-0" LG .75MM BTU/HR
 CAPACITY: 468 GALLONS
 1-1/2" THK. INSULATION

EXP-1000
 EXPANSION RESERVOIR
 18" O.D. x 3'-0" LG. X ATMOS.
 CAPACITY: 38 GALLONS



SHIPPED LOOSE
 FIELD INSTALLED IN CUSTOMERS PROCESS OUTLET PIPING
 (BY CUSTOMER)

H-1000

1 1/2" THK. FIBERGLASS
 INSULATION W/ .019" THK.
 ALUMINUM JACKETING

NOTES:
 1. PILOT LINE SHALL BE 3/8" SS 316 TUBING
 2. INSTALLED IN CUSTOMER PIPING

FOR APPROVAL
 - APPROVED
 - APPROVED AS NOTED
 BY: _____
 DATE: 05/04/2022

REV NO	DATE	BY	CHK'D	CUST APPD DATE	APPD BY	DESCRIPTIONS
B	05/04/2022	BJN				REVISED PER CUSTOMER COMMENTS
A	04/21/2022	BJN				ISSUED FOR CUSTOMER APPROVAL



THIS DRAWING IS THE PROPERTY OF
 TOTAL PRODUCT SERVICES, LLC OWASSO, OKLAHOMA
 AND IS NOT TO BE REPRODUCED WITHOUT
 PRIOR WRITTEN CONSENT.

MECHANICAL PROCESS AND INSTRUMENTATION FLOW DIAGRAM INDIRECT FIRED WATER BATH HEATER	DRAWN: BJN CHECKED BY: BJN APPD BY: BJN
36" OD x 12'-0" LG, 0.75 MM BTU/HR BASO/KIMRAY CONTROL SYSTEM	SCALE: NONE DATE DRAWN: 04/21/2022 REVISION NO: B
JOB SITE: GREENVILLE, NC CUSTOMER: GREENVILLE UTILITIES	DWG NO: 2203015-101 SHT: 1 OF 1

COIL SPECIFICATION

MATERIAL:
 PIPE: SA106-B
 FLANGES: SA105N
 OLETS: SA105
 WELDING FITTINGS: SA234-WPB

COIL M.A.W.P.: 1000 PSIG @ -20°F/250° F.
 MDMT: -20° F. @ 1000 PSIG
 LIMITED BY: DESIGN
 FINAL HYDROSTATIC TEST: 1500 PSIG (HOLD FOR 8 HR.)
 HEAT TREAT 0 HR. 0 MIN. @ 1150 ± 50 DEG. F.
 CORROSION ALLOWANCE: NONE
 RADIOGRAPHY: RT-1
 ASME CODE: YES
 NATIONAL BOARD STAMP REQUIRED : YES

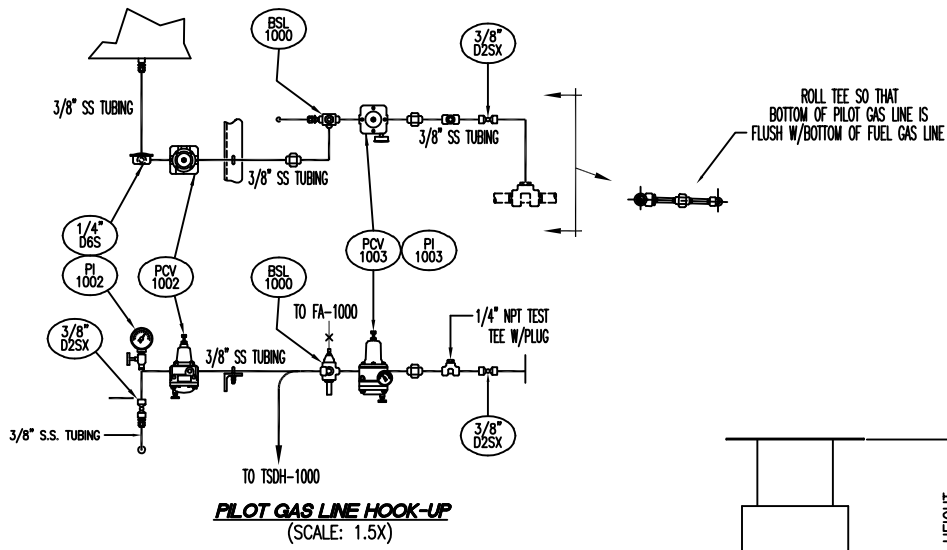
COIL SURFACE AREA (EXTERNAL): 78.3 SQ. FT.
 3" S/40/1-PATH, 8-PASSES

NOZZLE LEGEND

- A COIL CONN. (INLET)
3"-600# RF FLANGE
- B COIL CONN. (OUTLET)
3"-600# RF FLANGE
- C FILL CONN.
8" PRESSURE VACUUM
- D DRAIN
2" NPT CONN. W/ PLUG

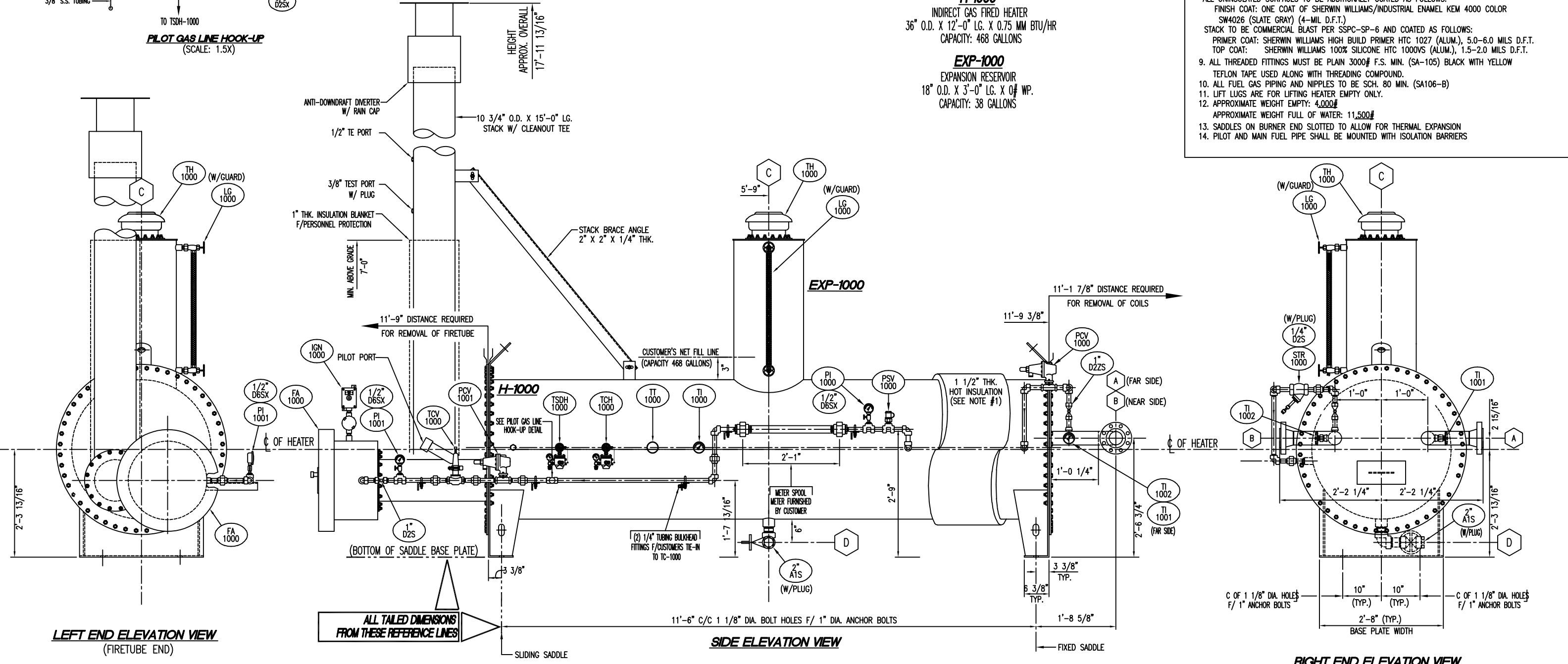
FABRICATION NOTES

1. HEATER TO BE COVERED W 1 1/2" THK. EASY WRAP 1000 & COVERED WITH .019" THK. EMBOSSED ALUMINUM JACKETING. JACKETING TO BE HELD IN PLACE W/ 1/2" WIDE STNL. STL. BANDING. (DO NOT PAINT ALUMINUM JACKETING)
2. STACK TO BE INSULATED W/ 1" THK. BLANKET FOR PERSONNEL PROTECTION ONLY.
3. ALL TUBING TO BE 316SS W/ 316SS FITTINGS.
4. ALL OPENINGS ARE TO BE PLUGGED OR COVERED SECURELY FOR SHIPMENT. FLANGED OPENINGS ARE TO BE COVERED WITH MOLDED PLASTIC COVERS, THREADED OPENINGS TO HAVE STEEL PLUGS. (NO WOODEN COVERS ALLOWED)
5. HEATER TO BE LEAKED TESTED W/ FIRETUBE, COIL AND THIEF HATCH BOLTED IN PLACE.
6. GASKETS FOR RF FLG'S TO BE 1/8" THK. FLEXITALIC STYLE "CG".
7. UNIT WILL BE TEST FIRED PRIOR TO SHIPMENT (UP THROUGH PILOT LIGHT) TO VERIFY PERFORMANCE & ENSURE THAT ALL SAFETY AND CONTROL SYSTEMS WORK AS DESIGNED. (THE MAIN BURNER WILL NOT BE IGNITED DURING THIS TESTING)
8. ALL SURFACES TO BE COMMERCIAL BLAST PER SSPC-SP-6 AND COATED AS FOLLOWS:
 PRIMER COAT: ONE COAT OF SHERWIN WILLIAMS/KEM KROMIK COLOR B50-AZ6 (GRAY) (4-MILS D.F.T.)
 ALL UNINSULATED SURFACES TO BE ADDITIONALLY COATED AS FOLLOWS:
 FINISH COAT: ONE COAT OF SHERWIN WILLIAMS/INDUSTRIAL ENAMEL KEM 4000 COLOR SW4026 (SLATE GRAY) (4-MIL D.F.T.)
 STACK TO BE COMMERCIAL BLAST PER SSPC-SP-6 AND COATED AS FOLLOWS:
 PRIMER COAT: SHERWIN WILLIAMS HIGH BUILD PRIMER HTC 1027 (ALUM.), 5.0-6.0 MILS D.F.T.
 TOP COAT: SHERWIN WILLIAMS 100% SILICONE HTC 1000VS (ALUM.), 1.5-2.0 MILS D.F.T.
9. ALL THREADED FITTINGS MUST BE PLAIN 3000# F.S. MIN. (SA-105) BLACK WITH YELLOW TEFLON TAPE USED ALONG WITH THREADING COMPOUND.
10. ALL FUEL GAS PIPING AND NIPPLES TO BE SCH. 80 MIN. (SA106-B)
11. LIFT LUGS ARE FOR LIFTING HEATER EMPTY ONLY.
12. APPROXIMATE WEIGHT EMPTY: 4,000#
 APPROXIMATE WEIGHT FULL OF WATER: 11,500#
13. SADDLES ON BURNER END SLOTTED TO ALLOW FOR THERMAL EXPANSION
14. PILOT AND MAIN FUEL PIPE SHALL BE MOUNTED WITH ISOLATION BARRIERS



H-1000
 INDIRECT GAS FIRED HEATER
 36" O.D. X 12'-0" LG. X 0.75 MM BTU/HR
 CAPACITY: 468 GALLONS

EXP-1000
 EXPANSION RESERVOIR
 18" O.D. X 3'-0" LG. X 0# WP.
 CAPACITY: 38 GALLONS



NOTES:
 1. PILOT LINE SHALL BE 3/8" SS 316 TUBING

FOR APPROVAL

- APPROVED
 - APPROVED AS NOTED

BY: _____
 DATE: 05/04/2022

REV. NO.	DATE	BY	CHK'D	CUST. APP'D. DATE	APP'D. BY	DESCRIPTIONS
B	05/04/2022	BJN				REVISED PER CUSTOMER COMMENTS
A	04/21/2022	BJN				ISSUED FOR CUSTOMER APPROVAL



THIS DRAWING IS THE PROPERTY OF TOTAL PRODUCT SERVICES, LLC OWASSO, OKLAHOMA AND IS NOT TO BE REPRODUCED WITHOUT PRIOR WRITTEN CONSENT.

GENERAL ARRANGEMENT FOR A INDIRECT FIRED WATER BATH HEATER	DRAWN: BJN CHECKED BY: BJN APP'D BY: BJN SCALE: NONE DATE DRAWN: 04/21/2022 REVISION NO: B
36" O.D. X 12'-0" LG. .75MM BTU/HR	DWG NO: 2203015-300 SHT: 1 OF 1
JOB SITE: GREENVILLE, NC CUSTOMER: GREENVILLE UTILITIES	