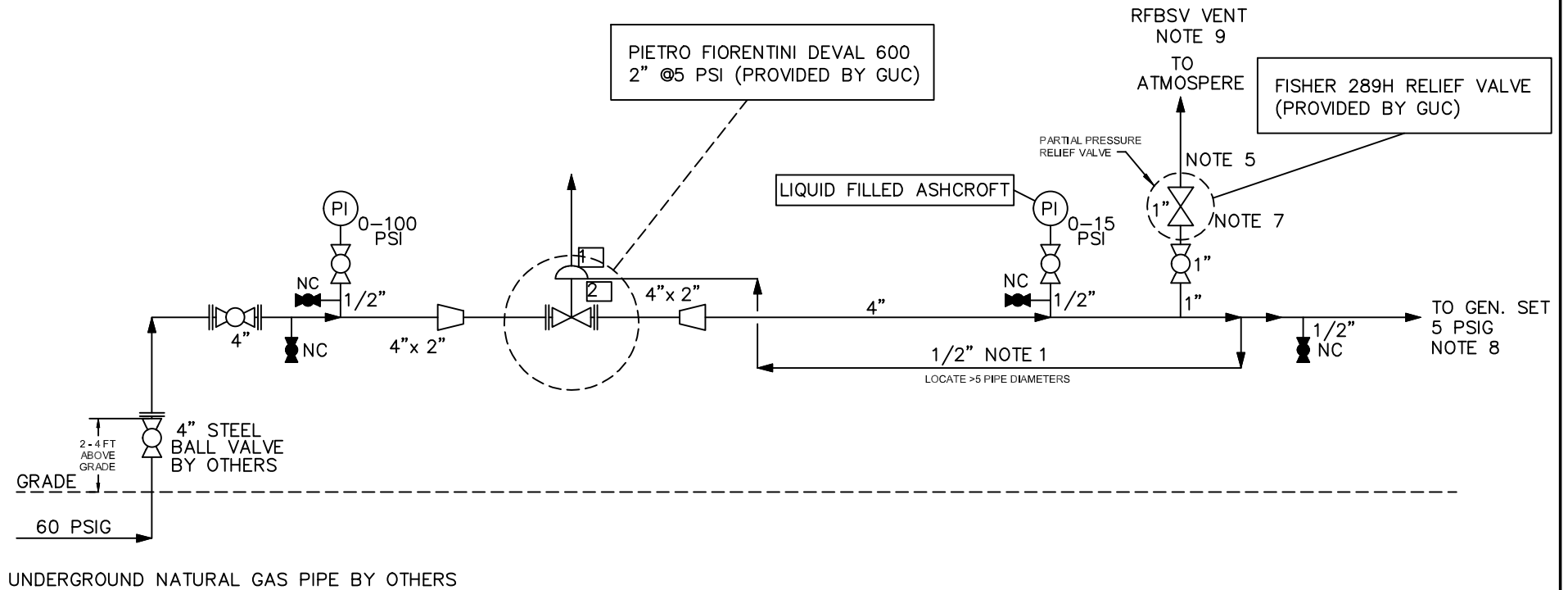


NOTES:

1. EXTERNAL SENSE LINE CONNECTION TO THE REGULATOR TO BE INSTALLED PER MANUFACTURERS INSTALLATION PROCEDURES. SENSE LINES SHALL BE STAINLESS STEEL AND BENT WITH LONG RADIUS BENDS MINIMIZING FITTINGS.
2. ROUTE ANY VENT LINES TO SAFE LOCATION. ALL VENTS ARE TO ROUTED SEPERATELY AND PROTECTED AGAINST MOISTURE.
3. PARTIAL PRESSURE SAFETY RELIEF DEVICE WILL BE FISHER 289H. INSTALL PER MANUFACTURERS INSTALLATION PROCEDURES.
4. STANDARD SCHEDULE 40 CARBON STEEL THREAD-O-LETS CAN BE USED FOR PIPING BRANCHES. TRANSITION TO SENSE LINES UTILIZING SWAGELock FITTINGS AS APPROPRIATE.
5. UTILIZE 1/2" JOMAR OR EQUIVALENT LOCKABLE QUARTER TURN BRASS OR STAINLESS STEEL BALL VALVES ON ALL BRANCH CONNECTIONS FOR GAUGES AND SENSE LINES.
6. UTILIZE 1/2" ASHCROFT 8009S 0-100 PSI OR EQUIVALENT STAINLESS-STEEL GAUGE.
7. ANY TUBING OR PIPING MATERIALS SHALL BE AT LEAST SCHEDULE 40 OR HIGHER.
8. FLEXIBLE PIPE BETWEEN NEW GAS LINE AND GENERATOR CONNECTION.



NO.	1-A
REVISIONS	
GAS PIPE DESIGN	
PRELIMINARY DESIGN	
ENGINEER'S DATE	

PRELIMINARY ADDITION

GREENVILLE UTILITIES
Greenville, North Carolina

230W GENERATOR SITE
GAS PIPE INSTALLATION

DWG. NO.	
DATE	
APP'D.	
SCALE: NONE	

XXXX_XX_XXXXXX_XXX_R? XX