



Greenville Utilities Commission

Statement of Qualifications to Provide:

# ENGINEERING SERVICES FOR 2025 DIMP GAS DISTRIBUTION SYSTEM IMPROVEMENTS

RFQ No. 25-59 | October 14, 2025



---

# TABLE OF CONTENTS

Section	1	Letter of Interest .....	1
	2	Brief History of Firm .....	2
	3	Statement of Professional Qualifications.....	3
	4	Similar Projects Completed .....	8
	5	Subcontractors .....	10
Appendix	A	Organizational Chart and Resumes	
	B	Schedule of Rates	
	C	Conceptual Project Schedule	
	D	Required Forms	



**SECTION 1:**  
LETTER OF INTEREST

October 14, 2025








Mr. Cleve Haddock  
Procurement Manager  
Greenville Utilities Commission  
PO Box 1847  
Greenville, NC 27835-1847

**RE: Statement of Qualifications (SOQ) for Engineering Services for 2025 DIMP Gas Distribution System Improvements**

Dear Mr. Haddock:

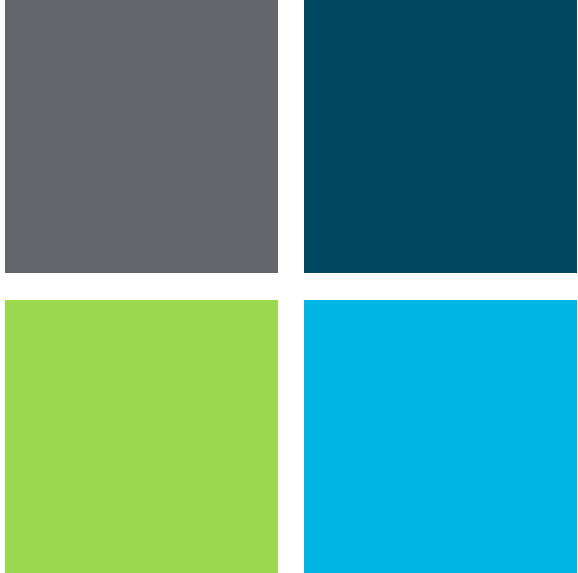
The Kleinfelder Team is pleased to submit our qualifications to provide comprehensive engineering services for Greenville Utilities Commission (GUC) distribution gas system improvements. We are confident that we can provide the required expertise and services to support the GUC's needs and long-term goals. The following are our team's strengths and benefits:

-  **Past Performance** - Kleinfelder has a very strong oil & gas business line providing engineering services for natural gas clients for over 27 years. We have a proven record of helping solve our clients' challenges, meeting or exceeding their expectations, producing quality work on time, all while working within or below budget.
-  **Natural Gas Distribution Experience** - Kleinfelder has executed numerous natural gas distribution projects across the state of North Carolina totaling over 130 miles for major utility providers such as Enbridge Gas of North Carolina (formerly Dominion Energy) and other confidential clients. The core services Kleinfelder provides for these projects, namely survey, design, permitting, bid assistance and construction administration, align with the scope of this project.
-  **Local Presence in the State** - We have assembled an experienced team of local professionals with an understanding and approach that will provide benefits to the City. This team has the knowledge, experience, and resources to carry out this contract. Due to our available capacity and local offices, we can begin work quickly in a manner that meets or exceeds the City's expectations. We are a US-founded company with three local offices; conveniently located across North Carolina. **The personnel in our Cary office will manage and execute the majority of the work** allowing us to respond quickly during design and construction, and we have additional staff support in our Charlotte and Greensboro offices as needed.
-  **Timely, Successful Permitting** - Kleinfelder has completed and received authorization from various permitting authorities including NCDOT, NCDEQ and local/county municipalities for many natural gas projects throughout the southeast. Kleinfelder can secure permits without delays by providing complete and thorough permit packages to the agencies, while leveraging our relationships gained by successfully permitting our previous gas distribution projects. Many of these permits are authorized without comments or requests for additional information.
-  **The Design Lead and Primary Point of Contact for this project will be Ryan Parker, PE**, whose contact information is below. Our team's strong reputation for delivering high-quality service and value for our clients will ultimately be the greatest asset for GUC. We understand the importance of responsiveness, readiness and efficient execution of any small or large task order. We welcome the opportunity to present our experience and capabilities and look forward to working with you on this contract and providing you with outstanding service.

Respectfully submitted,

Ryan Parker, PE  
Program Manager  
RParker@kleinfelder.com | 919.653.7057  
200 Regency Forest Dr., Suite 225  
Cary, NC 27518

Erik Messina, PE  
Design Service Line Lead  
EMessina@kleinfelder.com | 704.378.9177  
9009 Perimeter Woods DR., Suite E  
Charlotte, NC 28216



**SECTION 2:**  
BRIEF HISTORY OF FIRM

## 2 | BRIEF HISTORY OF FIRM

Kleinfelder, Inc. (Kleinfelder) is headquartered in California, with more than 110 regional offices and laboratories located throughout the United States. Founded in 1961, Kleinfelder provides planning, design, geotechnical engineering, construction management, environmental, and testing and inspection services to public and private agencies throughout the region. With over 3,300 personnel and multiple regional offices, Kleinfelder provides our local clients with nationwide expertise as well as individualized, market-specific support. Our extensive experience gives our team valuable historical knowledge of the local infrastructure, stakeholders, construction environment, and site conditions, as well as regional guidelines and standards.

Ranked as one of the top engineering firms by Engineering News Record, our Cary office is staffed by professional and technical personnel to manage and perform on any natural gas project that GUC may need support with. The depth of our local staff expertise will provide flexibility to meet project requirements for any consulting task, including permitting, design, bidding support, construction administration, resident engineering, inspection, constructability reviews, value engineering, and construction material testing.

We specialize in providing innovative solutions for the planning, design, construction, and maintenance of energy infrastructure. Kleinfelder's expertise extends across various sectors within the energy industry, including public and private oil and gas, power, renewable energy and energy transition. Our team's use of new technologies and emerging tools continue to put us at the forefront of innovation and efficiency.

We understand the energy market and align our processes and solutions to help ensure we meet the needs of our clients. We focus on the complete project lifecycle, developing optimal solutions while seeking to reduce costs and minimize risks.

Our comprehensive approach helps to deliver flexibility and timely responsiveness in any situation that may arise during project development. This unique combination of technical expertise and our client-centric approach allows Kleinfelder to play a significant role in advancing our client's energy goals with a focus on value, efficiency, reliability, and environmental responsibility.

Kleinfelder has the technical diversity to deliver a wide range of professional services for multi-disciplinary projects, characteristic of all-encompassing utility endeavors. Our team is complemented by senior principal engineers experienced in all aspects of natural gas and complicated utility infrastructure design.



## KLEINFELDER AT A GLANCE



Six Decades and Growing

**3,300+**  
Employees



Offices in the U.S., Canada, & Australia



**\$700+M**

Annual Revenue

### KEY MARKETS



#### PRIVATE SECTOR

(OIL & GAS, POWER, FACILITIES, INDUSTRIAL)



#### PUBLIC SECTOR

(STATE, LOCAL, TRANSPORTATION)



#### WATER

(POTABLE, WASTE, STORMWATER)

### ENR RANKINGS

- #21 - Top 50 Construction Management Firms
- #26 - Top 50 Program Management Firms
- #26 - Top 100 Professional Services Firms
- #45 - Top 500 Design Firms
- #76 - Top 200 Environmental Firms



**SECTION 3:**  
STATEMENT OF  
PROFESSIONAL  
QUALIFICATIONS

---

## 3 | STATEMENT OF PROFESSIONAL QUALIFICATIONS

Kleinfelder has performed and/or supported all phases of natural gas distribution projects, including but not limited to initial scope and design criteria development, detailed design, project management and administration, cost estimating, value engineering, bidding and construction administration. Specific to this project, Kleinfelder offers GUC the following:

- Demonstrated natural gas piping design and construction experience necessary to develop project base mapping, create construction drawings, prepare the necessary permit applications to support project development and provide construction administration services.
- A thorough understanding of the regulatory environment in North Carolina. Kleinfelder will be able to identify permit requirements and provide recommendations based on our experience with regulatory agencies to reduce or mitigate permitting challenges should impacts change as a result of routing during the project development process.
- An in-house design team of professionals with direct experience developing projects for natural gas clients. While Kleinfelder will use subcontractors for survey and inspection, the remainder of our team are Kleinfelder employees, based in North Carolina, that work together on a regular basis.

The list of recent, similar projects included in this SOQ further demonstrates our deep expertise in natural gas with a variety of scopes for multiple operators. With an industry leading understanding of natural gas equipment, code, standard requirements, and industry best practices, we collaborate with our clients to find the ideal solutions to best fit the project needs and requirements.

### PROJECT MANAGEMENT APPROACH

Kleinfelder understands the importance of responsiveness and timely delivery. Our project managers focus on meeting project schedules through regular communication, up-front planning, project staff resourcing, and tracking of project progress against schedule milestones. Several internal controls have been built into our project management systems to support accuracy, timeliness, and alignment with each client's unique needs for on-time / on-budget performance.

Kleinfelder provides project control services for a wide range of industries, applying its expertise on various energy, facilities, government, and transportation projects. Specifically, our project controls team in the southeast supports our project management and delivery teams on numerous natural gas projects. We have proven experience with Key Performance Indicators and determination of the appropriate systems, tools, and processes to meet clients' specific needs within a pre-determined budget.

When paired with excellence in technical delivery based on competent natural gas professionals with decades of experience in the industry, this approach produces results that meet and often exceed our clients' expectations. A couple of examples of our unique approach – success stories include:

- Distribution Program, Confidential North Carolina Client: Kleinfelder assists one of the local natural gas providers with the design and permitting of 40+ distribution projects a year. Project types include but are not limited to main extensions, replacements/relocations, maintenance/repair/retirement designs and DOT-driven relocations. Kleinfelder recently worked on a project in Smithfield where an NCDOT bridge replacement over the Neuse River required the relocation of the client's 8" plastic distribution main via horizontal directional drill (HDD). During the geotechnical investigation that Kleinfelder performed, the soil near the surface was found to be poor quality, but Kleinfelder worked with the client to establish a plan for mitigating the inadvertent return risk and discussed this with the contractor prior to construction which resulted in a successful drill.
- Pipeline Relocation Program, Colonial Pipeline Company: Kleinfelder assists Colonial with their relocation program; evaluating proposed conflicts from encroaching parties such as DOTs, railroads, developers, etc., designing relocations to eliminate the conflicts, permitting the relocation designs and assisting Colonial through the bid and construction phases of projects. Since 2020, Kleinfelder has been working with Colonial on the Major Mobility Investment Program (MMIP) consisting of many transportation projects in the Atlanta metropolitan region, several of which have impacted Colonial pipelines and/or rights-of-way.
- McGinnis Ferry Road Pressure Improvement Project for Southern Company Gas: Kleinfelder designed an approximately 2.9-mile 12" steel, high pressure distribution, natural gas line through Fulton, Gwinnett and Forsyth counties. The pipe was mainly installed within the existing right-of-way of McGinnis Ferry Road and the project included an HDD of the Chattahoochee River and Peachtree Industrial Boulevard. Our design and construction leads performed field visits early in design process and developed designs that are vetted against actual site conditions, so that construction documents were comprehensive, resulted in an expedited bidding (fewer RFIs) and minimized number of change orders during construction.

- Kinder Morgan’s CSX Encroachment Project: The Kleinfelder team value engineered construction operations and optimized field oversight resulting in a saving of over \$100K.
- Pipeline 49 for National Grid: Kleinfelder engaged with National Grid, internal and external subject matter experts, as well as the project team to minimize risk for an innovative trenchless design where constructability, subsurface geologic conditions, and environmental impacts were forefront in developing a feasible solution that National Grid has since been able to construct successfully.
- Operations Pipeline for Baltimore Gas and Electric: Kleinfelder expedited project schedule by recommending design and overall project execution in two parts, thus allowing for an earlier construction start date.
- PECO’s Accelerated Gas Infrastructure Modernization: For this project, Kleinfelder completed over 50 AGIMP trenchless replacement designs, 9,800 LF of trenchless design, and over 100 geotechnical borings, on time and within the budget.

At Kleinfelder, our Quality Management Program (KQMP) works with Delivery, Markets, and the Kleinfelder Global Technical Network to establish and implement processes to:

- Confirm Kleinfelder meets applicable client, regulatory, and accreditation agency quality requirements;
- Facilitate efficient and effective delivery of client services and deliverables; and
- Continuously improve processes and operations.

KQMP is designed to provide multiple, flexible paths to deliver services that meet or exceed client expectations. Kleinfelder has developed several quality management program manuals and supporting quality procedures addressing specific quality standards for off-the-shelf use on projects. Kleinfelder will also develop project specific quality management plans, as needed, to meet client quality requirements.



*Greenville Utilities Commission will benefit from Kleinfelder’s comprehensive project management and quality control toolbox. These tools are designed to mitigate risk by managing scope, schedule, and budget to provide you with quality deliverables.*



## SURVEYING

Our surveying teaming partner, Regional Land Surveyors, Inc. (RLS), will conduct design surveys and perform Subsurface Utility Engineering (SUE) services to satisfy the requirements of the base mapping and field augmentation sections of the RFQ. Their land surveying crews will operate under the direction of a North Carolina Licensed Professional Land Surveyor.

RLS’s design surveys include full topography of the project area, property boundary and road right-of-way determination, creation of exhibits or plats for easement acquisitions (if required), and underground utility locations. Through the use of NC811 and private utility locators, RLS can provide SUE Level B services and can subcontract vacuum excavation providers to perform SUE Level A services when certainty is needed in determining the location, depth and size of conflicting utilities.

Regarding construction of natural gas projects, **RLS has 30+ years of experience** in construction staking, as-built surveys and the creation of record drawings. They are also well versed in capturing any necessary MAOP data (MTRs, NDT reports, etc.) that may be needed for the operation of the pipeline.

### **CONSTRUCTION DRAWINGS AND SPECIFICATIONS**

Kleinfelder team will adhere to professional engineering practices and applicable codes such as 49 CFR Part 192 for the project. The Kleinfelder Team and GUC will work together during this phase so that the design intent and project expectations are exceeded, or met, at a minimum. It is also the phase in which the design itself will achieve the refinement and coordination necessary for a polished product. In this phase, engineering elements of the project and project cost estimates will be further developed.

Design drawings will be based on the field generated site survey, prepared in AutoCAD DWG format on standard 22"x34" plan sheets, horizontally referenced to North Carolina State Plane coordinates, U.S. Survey Feet, North American Datum (NAD83), and vertically to the North American Vertical Datum (NAVD88), and will include necessary explanatory notes, schedules, legends and details. The plans are anticipated to include:

- Cover Sheet with Drawing Index
- Construction Notes
- Bill of Materials (BOM)
- Alignment Plans including:
- Erosion & Sediment Control Design
- Trenchless Designs (if required)
- Profile of Road, Utility, or Environmental Crossings if necessary.
- Standard Details including:
- Erosion & Sediment Control Measures
- NCDOT Traffic Control
- Natural Gas Trench Installation

If full traffic control design is required either for permitting or by GUC, Kleinfelder can develop traffic control plans to effectively manage traffic through the construction project, provide for the safety of both workers and traffic and minimize impacts to the surrounding community.

Designs shall be signed and sealed by a North Carolina Professional Engineer. Submissions will include initial drawings and final/Issued for Construction (IFC) drawings.

As part of the design, Kleinfelder will prepare a +/- 50% level of accuracy order of magnitude opinion of probable construction cost (OPCC). Kleinfelder will solicit a cost estimate from a GUC-experienced contractor(s). It is assumed that GUC will provide estimates for material costs.



### **TRENCHLESS DESIGNS (HDD AND BORE, IF REQUIRED)**

Locations for trenchless installation methods (HDD or bore) will be considered and identified early in the project, based on information obtained during survey collection. Major utility crossings / structures (bridges, culverts, etc.) will be candidates for trenchless methods along with road crossings. Kleinfelder understands that the majority of our clients desire to keep the number of trenchless installations to a minimum due to the increased construction costs over open-cut installations.

When site conditions are such that the use of trenchless approach cannot be avoided, a separate drawing will be prepared for each HDD and/or bore design which is anticipated to include elevation information, utility information (type, size, location, and depth), soil boring logs (if obtained), significant obstacles, and the HDD or bore alignment and profile.

---

Kleinfelder will coordinate with GUC to determine the GUC's tolerances and minimum design parameters, but at a minimum Kleinfelder will attempt to adhere to the following rules of thumb:

- Minimum bend radius for steel pipe will be 100 times the pipe diameter. Minimum bend radius for plastic pipe installations will be evaluated on a case-by-case basis.
- Entry and exit angles will be kept to a minimum (between 8 & 16 degrees for the entry and between 5 & 12 degrees for the exit).

For small diameter plastic lines, Kleinfelder understands that trenchless installation by directional drill is less costly, lower environmental impact, and faster than open trench, often making it the preferred method by asset owners and contractors. Kleinfelder has extensive experience providing engineered designs for these applications as well. Given the reduced risk and complexity associated with small diameter drill methodologies, Kleinfelder provides a value-oriented design which ensures safety and reliability, while prioritizing flexibility and cost.

## PERMITTING PHASE

Kleinfelder has substantial and recent experience in permitting processes through local issuing authorities, including but not limited to North Carolina Department of Transportation (NCDOT), North Carolina Department of Environmental Quality (DEQ), and railroad companies like CSX. Erosion and Sediment Control Plans (ESCPs) will be prepared according to the latest standards and specifications outlined in the NCDEQ Erosion and Sediment Control Planning and Design Manual, to obtain erosion and sedimentation control approval and to submit a Notice of Intent (eNOI) form requesting a Certificate of Coverage (COC) under the NCG010000 Construction General Permit.

We anticipate that NCDOT 16.1 and/or 16.2 encroachment agreements will be required for the project. Our team is very familiar with the application process as we have obtained similar permits for the utility projects we designed. We have been involved in numerous NCDOT-related projects and are very familiar with the NCDOT encroachment process and permitting, including the online encroachment submittal portal, and can provide project-specific traffic control plans if needed. We will also help to obtain other permits that may be required for project execution and attend meetings on GUC's behalf if necessary.

In addition, it appears that several of the mains being replaced occur along City of Greenville maintained streets and would require a Right-of-Way Excavation & Restoration Permit from the Public Works Department, which Kleinfelder can prepare and submit.

It will be evaluated as we get into the project, but it appears that one of the main replacements occurs along private streets, Oglesby Dr, that is not maintained by NCDOT or City of Greenville and may or may not require permitting..

## BIDDING ASSISTANCE

The Kleinfelder team will provide engineering services to the GUC during the bidding phase of the project. The proposed services may consist of the following tasks:

- Provide a signed and sealed set of reproducible bidding documents;
- Prepare a list of prospective bidders;
- Attend and participate in a pre-bid conference;
- Respond to requests for technical information from prospective bidders and assist GUC in the issuance of addenda as appropriate to clarify, correct, or change the bidding documents. Assemble contract documents, including copies of signed contract forms and updated drawings and specifications incorporating revisions made by addenda;
- Make recommendations for the construction schedule and schedule of values; and
- Assist GUC in obtaining bids and preparing contracts for construction.

## CONSTRUCTION ADMINISTRATION

Our team typically provides construction administration services on all projects we design. Therefore, during the construction phase of the project, Kleinfelder, as requested, can provide the following services:

- Represent GUC to the extent provided in the contract documents.
- Review shop drawings and contractor submittals.
- Respond to Requests for Information (RFIs).
- Participate in project coordination and/or field observation meetings and prepare meeting agendas and minutes.
- Assist GUC in review and approval of change orders and pay applications.

## CONSTRUCTION INSPECTION

Our inspection teaming partner, Gulf Field Services (Gulf), will provide construction inspection services as needed during the construction of this project. Gulf offers the following key advantages:

- A wide range of personnel classifications available for a true “one-stop-shop.”
- A seasoned and qualified Account Management team to address and fulfill your inspection requirements.
- Proven compliance program that ensures all inspectors will have required client and Gulf safety, technical training, as well as craft specific certifications.

This project fits extremely well with the services that Gulf provides and the experience / history they maintain. Gulf has the people, processes, and systems to provide exceptional Inspection support to handle each responsibility and represent Kleinfelder while providing management, controls, and technical leadership in our reviews, comments, approvals, and reports across each project.



With no exception, we have provided all services requested in the RFQ for natural gas through the **hundreds of projects** we have executed for our natural gas clients in the Southeastern United States but also across the country. The table below depicts some of those projects completed in the last 10 years.

CLIENT	STATE	NO. OF PROJECTS	SCOPE
<i>CONFIDENTIAL CLIENT</i>	<b>NC</b> , SC, TN OH, KY	305	Ecological and Environmental Permitting, Conceptual and Preliminary Engineering Studies, Building and Site Architecture, Natural Gas Design, DOT Permitting, GIS, Bidding Services, Conceptual and Preliminary Engineering Design, Writing Technical Memorandums, Project Management, Owner's Representative, Construction Administration and Construction Observation.
<i>ENBRIDGE GAS NORTH CAROLINA (FORMERLY DOMINION ENERGY NORTH CAROLINA)</i>	<b>NC</b>	58	Ecological & Environmental Permitting, Conceptual and Preliminary Engineering Studies, Natural Gas Design, DOT Permitting, Conceptual and Preliminary Engineering Design, Project Management, Construction Administration, and Construction Observation.
<i>KINDER MORGAN</i>	AL, AZ, CA, FL, GA, KS, LA, MS, <b>NC</b> , NJ, NM, OH, SC, TX, VA	106	Ecological and Environmental Permitting, Conceptual and Preliminary Engineering Studies, Natural Gas Design, DOT Permitting, GIS, Bidding Services, Conceptual and Preliminary Engineering Design, Project Management, Owner's Representative, Construction Administration, and Construction Observation.
<i>EQUITRANS, L.P.</i>	<b>NC</b>	4	Ecological and Environmental Permitting, Natural Gas Design, and Project Management.
<i>DOMINION ENERGY CAROLI-NA GAS TRANSMISSION, LLC</i>	SC	5	Conceptual and Preliminary Engineering Studies, Natural Gas Design, DOT Permitting, Conceptual and Preliminary Engineering Design, and Project Management.
<i>SOUTHERN COMPANY GAS</i>	GA, TN, VA	394	Ecological and Environmental Permitting, Conceptual and Preliminary Engineering Studies, Building and Site Architecture, Natural Gas Design, DOT Permitting, GIS, Bidding Services, Conceptual and Preliminary Engineering Design, Writing Technical Memorandums, Project Management, Owner's Representative, Construction Administration, and Construction Observation.
<i>FLORIDA GAS TRANSMISSION COMPANY, LLC</i>	FL	17	Natural Gas Design, DOT Permitting, and Project Management

***We included few representative project descriptions as requested by the RFQ, selected from our data base of hundreds of natural gas projects executed in the southeastern United States.***



**SECTION 4:**  
SIMILAR PROJECTS  
COMPLETED

## 4 | SIMILAR PROJECTS

### Confidential Gas Utility Client Project

#### Colfax, North Carolina

**Pipeline Size:** 2" & 4" MDPE (distribution) and ¾" MDPE (service)

**Pipeline Length:** 4,150 feet

#### Services Provided:

- Project management
- Conflict analysis with proposed NCDOT project
- Route development
- Relocation design
- Horizontal directional drill (HDD) design
- MAOP verification

#### Kleinfelder Staff Involved:

- Michael Corrigan
- Evan Furr
- Michael Abernethy

#### Client Reference:

Kenneth State, 2625 Uwharrie Rd, High Point, NC 27263

P: 336.941.0103

### Confidential Gas Utility Client Project

#### Fayetteville, North Carolina

**Pipeline Size:** 2" & 4" steel

**Pipeline Length:** 13,000 feet

#### Services Provided:

- Project management
- Conflict analysis with proposed NCDOT project
- Route development
- Relocation design
- Horizontal directional drill (HDD) design
- NCDOT encroachment permitting

#### Kleinfelder Staff Involved:

- Michael Corrigan
- Alex Farmer
- Diane Fregosi

#### Client Reference:

Jeff Taylor, 4740 Corporation Dr, Fayetteville, NC 28306

P: 910.850.1220

### Confidential Gas Utility Client Project

#### Wilmington, North Carolina

**Pipeline Size:** 8" plastic

**Pipeline Length:** 10,791 feet

#### Services Provided:

- Project management
- Conflict analysis with proposed NCDOT project
- Route development
- Relocation design
- Horizontal directional drill (HDD) design
- NCDOT encroachment permitting

#### Kleinfelder Staff Involved: Client Reference:

- Michael Corrigan DJ Medeiros, 1321 S 10th St, Wilmington, NC 28401
- Alex Farmer P: 910..431.3233
- Michael Abernethy



**Dominion Energy North Carolina  
NC-98 Enhancement Project  
Durham, North Carolina**

**Pipeline Size:** 6" steel

**Pipeline Length:** 8.2 miles

**Services Provided:**

- Project management
- Route development
- Surveying & land acquisition
- Relocation design
- Laydown yard design & permitting
- Horizontal directional drill (HDD) design and field inspection
- Geotechnical engineering
- Environmental planning & permitting
- NCDOT encroachment & City of Durham permitting

**Kleinfelder Staff Involved:**

- Keely Lane
- Ryan Parker
- Joseph Lo
- Tyler Wilson

**Client Reference:**

Rhonda Lemon, 2020 Energy Drive, Apex, NC 27502

P: 919.367.2755



**Dominion Energy North Carolina  
Holly Springs Road Widening  
Holly Springs, North Carolina**

**Pipeline Size:** 12" steel

**Pipeline Length:** 1.9 miles

**Services Provided:**

- Project management
- Conflict analysis with proposed NCDOT project
- Route development
- Surveying
- Plat development
- Relocation design
- Horizontal directional drill (HDD) design and field inspection
- Geotechnical engineering
- Environmental planning & permitting

**Kleinfelder Staff Involved:**

- Ryan Parker
- Keely Lane
- Joseph Lo
- Tyler Wilson
- Kevin Martinez

**Client Reference:**

Rhonda Lemon, 2020 Energy Drive, Apex, NC 27502

P: 919.367.2755





**SECTION 5:**  
LIST OF SUBCONTRACTORS

## 5 | SUBCONTRACTORS



**Regional Land Surveyors, Inc.** (RLS) was established in 1996 and is owned and operated by three licensed professionals with a combined 90 plus years of experience in land surveying and project management. Led by our President Kim Lilly, Vice Presidents Andy Clark and Jeff Smith, RLS, commands a team of nine survey field crews and seven skilled CAD and GIS technicians.

RLS has been involved with natural gas projects for over 18 years and has extensive experience with design and as-built surveys associated with new gas main installations. As is highlighted in the project experience section, they have been involved in numerous natural gas projects from start to finish.

RLS is a registered Small Business with the U.S. Small Business Administration (SBA). They are currently licensed in North Carolina, South Carolina, Tennessee and Kentucky with more states to come.

### Company Location / Phone Number

8642 W. Market St, Suite 100, Greensboro, NC 27409  
P: 336-665-8155

### Key Personnel

Jeff Smith, PLS / David A. (Andy) Clark, PLS

### Experience

RLS's experience and expertise in the Oil and Gas industry is extensive. Below is a list of just a few of their projects:

- **Piedmont Natural Gas R5777C Distribution Relocation - Relocation of** approximately 4 miles of distribution gas main. RLS provided design surveys (including SUE A and B), easement mapping, and construction layout.  
**Contact:** Shane Huss, Piedmont Natural Gas, P: 980.429.0461
- **Piedmont Natural Gas Sheffield Distribution Project - 1.5-mile route** survey with topography, SUE Level B, road right-of-way determination, easement mapping and construction layout.  
**Contact:** Shane Huss, Piedmont Natural Gas / P: 980.429.0461
- **Piedmont Natural Gas AM-07 Phase 3 - Installation of 4 miles of 24" steel** pipeline. RLS provided design surveys (including SUE B and forty SUE A test holes), easement mapping, construction layout and as-built survey with material tracking and MAOP documentation.  
**Contact:** Brittany Webb, Burns & McDonnell / P: 614.705.1561
- **Piedmont Natural Gas Line 323 Retrofit - Replacement of approximately** one mile of 10 steel pipeline. RLS provided design surveys (including SUE A and B), easement mapping, construction layout, as-built survey with material tracking and MAOP documentation and record drawing creation.  
**Contact:** Ryan Parker, Kleinfelder / P: 919.755.5011



**Gulf Field Services** (Gulf) has served the energy industry since 1953 and has grown to be one of the leading contractors for the provision of construction management and inspection personnel. They provide experienced personnel for constructing and repairing pipelines, pump and compressor stations, storage terminals, oil and gas processing plants, power systems, and much more.

Gulf's field services personnel go wherever their clients operate, capable of staffing personnel in all 50 states and under the most demanding circumstances. Gulf provides inspection services that include general utility, welding, coating, safety, and environmental inspection for pipeline, integrity, gathering and processing, facility, and storage projects. They have a current staffing capacity of more than 2,000 Inspectors and employ 15 full-time staff in their Houston office, to support the account management, recruitment/placement, project controls, and safety of our inspection personnel.

### Company Location / Phone Number

1080 Eldridge Parkway, Suite 500 Houston, TX 77077 / P: 346.75.7116

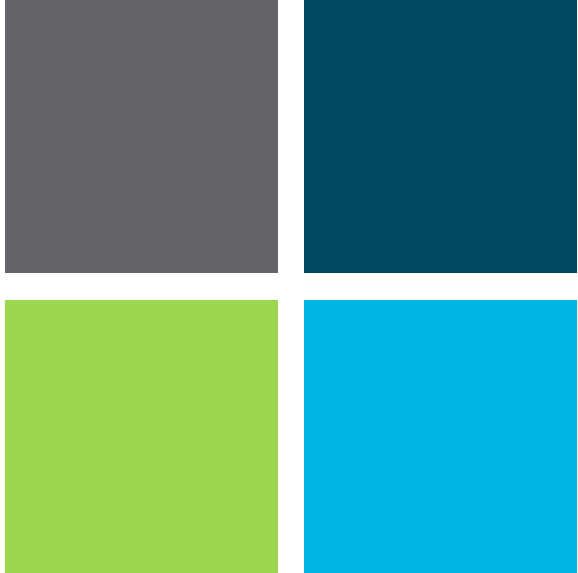
### Key Personnel

Alan L. "Buzz" Steele / Sarah Gonzalez

### Experience

For thirty-six years, Gulf Field Services has provided construction inspection and other personnel and has had the privilege of working with some of the most respected and well-known oil and gas pipeline companies throughout the United States. Provided is a partial listing of their clients/projects:

- **Piedmont Natural Gas/Duke Energy** - Currently Gulf is the sole source provider of inspection services for Piedmont/Duke projects located in South Carolina, North Carolina, Ohio, Kentucky, and Tennessee. Gulf Field Services supports all projects across the entire Piedmont/Duke system with 125 total inspectors.
- **Enbridge Gas North Carolina (EGNC)** - Gulf has recently been awarded the contract to provide inspection services and other professional resources to EGNC. Gulf anticipates providing approximately 25 inspectors across their system.
- **Baltimore Gas & Electric (BGE)** - Since 2016, Gulf has been supporting BGE on various projects throughout the greater Baltimore area. From the beginning of their partnership, Gulf has provided 8+ inspectors over the years to support BGE projects.
- **Pacific Gas and Electric Company (PG&E)** – Gulf is currently providing inspection services for PG&E projects to support their infrastructure covering approximately 40,000 miles of natural gas distribution pipelines and 6,500 miles of transportation pipelines. These projects include residential, inner-city, and commercial areas located across the West Coast. Gulf supports PG&E with 200 inspectors and 25 management personnel per year.
- **Enbridge** - Gulf currently participates in the Enbridge Contingent Labor Agreement (ECLA) also known as the RightStaff (inspection) program. Gulf has a long history of successfully filling roles as requested in working within the Fieldglass system for recruiting, placements, and invoicing. In addition to this program Gulf has supported major projects through various Enbridge entities including the Sabal Trail project, completed for Spectra Energy, where Gulf provided over 350 personnel for construction management, inspection, and commissioning services. This project consisted of a 516-mile, 36-inch diameter natural gas pipeline and three compressor stations from AL through GA, terminating at the Central Florida Hub near Orlando, FL.



**APPENDIX A:**  
ORGANIZATIONAL CHART  
AND RESUMES



**Erik Messina, PE**

*Design Service Lead*



**Ryan Parker, PE\***

*Project Manager*



**Michael Corrigan**

*Technical Review*

**TECHNICAL SUPPORT STAFF**

**LAND SURVEY, SUE, AND AS-BUILT SURVEY**

**Regional Land Surveyors, Inc.**

**Jeff Smith, PLS**

Andy Clark, PLS

*Surveying crews providing support*

**ENGINEERING DESIGN, AND PERMITTING**

**Evan Furr, PE**

Keely Lane, PE\*

Joseph Lo\*

Tyler Wilson\*

Kevin Martinez\*

Diane Fregosi, EIT

Alex Farmer

Michael Abernethy

Adriana Sanchez

**CONSTRUCTION INSPECTION**

**Gulf Field Services**

**Alan 'Buzz' Steele**

Sarah Gonzalez

**LEGEND**

Key personnel in **BOLD** denote resume is included within this section

\* Denotes key personnel that work out of the Cary, NC office



# RYAN PARKER, PE

## Project Manager

With successful design abilities and strong people/communication skills, Mr. Parker has more than 14 years civil engineering experience, with a particular focus in pipelines. His current project manager portfolio includes managing \$9 million in projects, and thrives in leading teams to support large, complex pipeline projects. Mr. Parker serves as one of our primary oil and gas program managers and is a coleader of Kleinfelder's internal Oil and Gas Community of Practice. In this role, he is able to lead our nationwide staff in achieving the high level of quality for which Kleinfelder is known.

### Years of Experience

14

### Education

Bachelors, Civil Engineering, North Carolina State University, 2011

### Registrations/Certifications

Professional Engineer (PE)-Civil

No. 042102, NC

No. PE040929, GA

No. 33359, SC

No. 81133, FL

No. PE.0056141, CO

NPDES Certified, Level II Certified Design Professional, GA

Level III Certification: Design of Erosion and Sediment Control Plans, NC

## SELECT PROJECT EXPERIENCE

### Holly Springs Rd Widening, Enbridge Gas North Carolina, NC

Project Manager for the relocation of 1.9 miles of 12" steel pipe due to an NCDOT road widening project in Wake County, NC. The pipe was mainly installed within the existing right-of-way and included an HDD of Middle Creek and a water line. Kleinfelder assisted the client with permitting through NCDOT and NCDEQ as well as construction administration. In addition to design, Kleinfelder provided environmental services, including wetland and stream delineation, as well as geotechnical investigations for all the trenchless crossings on the project.

### Baxter Lane Railroad Project, Confidential Client, NC

Project Manager for the design of an 875 linear foot, 8" MDPE gas line installed via HDD under Chesapeake and Albemarle/Norfolk Southern Railroad and an NCDOT road in Currituck County, NC. Kleinfelder assisted the client with permitting through NCDOT and both railroad entities, provided wetland and stream delineation, and performed a geotechnical investigations for the HDD.

### R-5724 Chatham County Rd Widening, Enbridge Gas North Carolina, NC

Project Manager for the relocation of approximately 9,000 linear feet of natural gas distribution main due to an NCDOT road widening project in Chatham County, NC. The relocation consisted of a mix of 2" plastic, 8" steel, 8" plastic and service lines within DOT's proposed right-of-way. Kleinfelder assisted the client with permitting through NCDOT and coordinating with DOT's utility coordinator to ensure there were no conflicts with the other utilities being relocated like water and sewer.

### Line 479, Confidential Client

Project Manager for the replacement of an existing transmission line that had inadequate records with a new 12" steel, 27-mile line. The design included 3 HDDs, numerous conventional bores at road and railroad crossings, 3 remotely actuated mainline valves, a launcher, and 6 regulator stations. The project also included route development, geotechnical investigations, wetlands and stream delineation, threatened endangered species surveys, surveying and as-builts, and erosion/ sediment control design. Permitting included county, local municipality, GDOT, CSX railroad, power authorities, SHPO, US Fish & Wildlife, USACE, GA EPD and FAA.





# MICHAEL CORRIGAN

## Techncial Review

Mr. Corrigan is an experienced engineer with over 38 years of utility and pipeline experience in the natural gas industry. He has a broad scope of knowledge ranging from project management, engineering, construction, policy, and procedures. His expertise includes main installations – both steel and plastic, transmission and distribution, including design, location and sighting, HDDs, jack/bore, materials selection, installation and construction in urban and rural areas, piggable designs, tie-ins, hydrostatic testing, tie in procedures, tapping/stopping, welding (currently hold a CPWI certificate), plastic fusing and electrofusion, trenching and competent person evaluations, traceability and CFR documentation requirements; regulator stations, regulation, heaters, filtration, and fabrication; and valves, including valve selection, function, repair and replacements. He has also contributed to industry organizations as committee member on the American Gas Association (AGA) and Southern Gas Association (SGA) for over 10 years.

### Years of Experience

43

### Education

Bachelors, Engineering, Hofstra University 1999

Associates, Engineering, State University of New York Col.-Farmingdale, 1994

Associates, Civil Engineering Technology, State University of New York Col.-Farmingdale, 1984

## SELECT PROJECT EXPERIENCE

### Neuse River Bridge, Confidential Client, Smithfield, NC

Manager in Charge of conflict analysis and design of 1,500 feet of 8" plastic natural gas distribution line to be installed via horizontal directional drill under the Neuse River in connection with the NCDOT BR-0086 Neuse River project located in Smithfield, North Carolina. Also responsible for the management of NCDOT encroachment permitting, coordination with other utilities and sediment and erosional control plans. This project included the design of the gas main and service line reconnections, an HDD under a major river, purging and abandonments of existing gas mains, tie in details, and a project BOM.

### Wentworth St Bridge, Confidential Client, Rockingham, NC

Manager in Charge of conflict analysis and design of 1,200 feet of 6" high pressure distribution and 200' of 2" distribution natural gas lines installed inside existing utility owned ROW within an NCDOT Project. Also responsible for the management of the NCDOT encroachment permitting, coordination with other utilities and sediment and erosional control plans. This project included the design of the gas main and service line reconnections, an HDD under a creek, purging and abandonments of existing gas mains, tie in details, a project BOM and MAOP and Traceability Documentation.

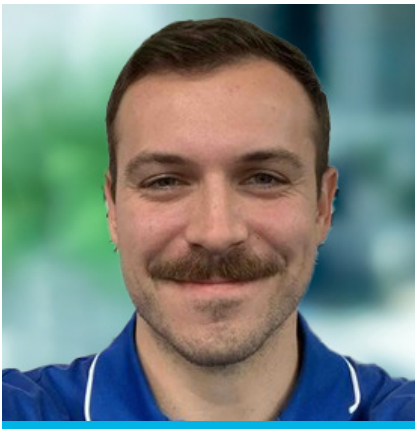
### U-5797 Fayetteville Rd, Confidential Client, Lumberton, NC

Manager in Charge of conflict analysis and design of 12,400 feet of natural gas distribution lines (various sizes) to be installed throughout various road rights-of-way in connection with the NCDOT U-5797 Road Improvement Project, located in Lumberton, North Carolina. Also responsible for the management of NCDOT encroachment permitting, coordination with other utilities and sediment and erosional control plans. This project included the design of the gas main and service line reconnections of various sizes and materials and purging and abandonment of existing gas mains.

### U-5710/U-5710A/R-3300AB, Confidential Energy Client, Wilmington, NC

Manager in Charge of conflict analysis and design of 8,000 feet of natural gas distribution lines (various sizes) to be installed throughout various road rights-of-way in connection with the NCDOT U-5710, U-5710A, and R-3300AB Military Cutoff Relocation Project. Also responsible for the management of NCDOT encroachment permitting, coordination with other utilities and sediment and erosional control plans. This project included the design of the gas main and service line reconnections of various sizes and materials and purging and abandonment of existing gas mains.





# EVAN FURR, PE

## Project Engineer

Mr. Furr is an engineer with 6 years' experience in natural gas pipeline design, with a particular specialty with distribution projects and MAOP verification. He is highly proficient in AutoCAD Civil 3D and its implementations and has skills in pipeline routing, trenchless design such as horizontal directional drilling (HDD) and permitting.

### SELECT PROJECT EXPERIENCE

#### **NCDOT U-3422 Camden Rd, Confidential Client, NC**

Project Engineer for the relocation of 14,000 ft of 8" plastic pipe due to an NCDOT road widening project in Rockingham County. The pipe was mainly installed within the DOT ROW which required 3 HDDs under various cross-streets and one significant HDD under an unnamed body of water. In addition to design, Kleinfelder provided environmental services, including wetland and stream delineation, as well as a geotechnical investigation for the water body crossing.

#### **Standing Springs, Confidential Client, SC**

Project Engineer for the design of a 9,100 ft 8" plastic distribution main to be installed in Mauldin, SC. The new main was primarily installed within DOT ROW and PE, which required 5 HDDs under various cross-streets and one significant HDD which spanned two state roads, a highway, and a railroad. In addition to design, Kleinfelder provided environmental services, including wetland and stream delineation, as well as a geotechnical investigation for railroad HDD. Kleinfelder also assisted the client with environmental permitting through the county and the state, as well as encroachment permitting through SCDOT and the railroad entity.

#### **McKnight St MAOP Verification, Confidential Client, NC**

Project Engineer for the MAOP verification of 500 ft of 4" steel high pressure distribution main that was installed in Asheboro, NC. Reviewed documentation for all pipe, fittings, valves, and associated components, as well as all weld reports and pressure test data to ensure there was sufficient data to validate the MAOP of the system under the project per §192.619 and Part §192.621.

#### **NCDOT BR-0086, Confidential Client, NC**

Project Engineer for the design of an 1,175 ft 8" plastic gas line to be installed via HDD under the Neuse River in Smithfield, NC. The relocation was driven by an NCDOT bridge relocation project, of which the existing gas main would have been in conflict. The design required diligent coordination with the bridge designer, as well as water and sewer to ensure each respective relocation design did not conflict with others. In addition to design, Kleinfelder provided environmental services, including wetland and stream delineation, as well as a geotechnical investigation.

### Years of Experience

6

### Education

Bachelors, Mechanical Engineering, University of North Carolina at Charlotte, 2017

### Registrations/Certifications

Professional Engineer (PE)  
No. 056307, NCEES





---

## JEFF SMITH, PLS

Vice President/Project Manager

### Responsibilities

In charge of all project management, including project planning and scheduling, office and field crew coordination, client and consultant collaboration, budgeting, project review and quality assurance.

### Experience

26 years of overall surveying experience and 20 years in project management. Been directly involved in natural gas projects since 2011. Relevant experience with Natural Gas projects is listed below:

- Retrofit & ILI Projects
  - Project Manager for surveying efforts at retrofit/station sites: Boundary and topographic surveys, existing easement location, new easement mapping, NCDOT and municipal permitting, construction layout and as-built mapping and GIS deliverables.
  - Project Manager for survey support of pigging operations: setting AGMs, anomaly stakeout, and anomaly as-builts.
  - Project Manager for right-of-way clearing efforts: Existing easement research, interpretation and determination, new easement mapping, gas line locations and depth reporting, and right-of-way staking.
- New Construction Projects
  - PNG Bertie Prison Line – Design and Construction of 1 mile of Transmission Gas Pipeline and 4 miles of associated distribution gas pipeline in Windsor, NC.
  - PNG Line 6 Replacement – 2 mile replacement of transmission gas pipeline in Stantonsburg, NC
  - PNG Line 297 Relocation – 2 mile replacement of transmission gas pipeline in Hickory, NC.
  - PNG Line 210 Pressure Reduction Project – installation of a new regulator station near Edenton, NC
  - PNG Majolica Rd RS – new regulator station in Salisbury, NC
  - PNG Ballantyne & Dixie River Rd – new regulator stations in Charlotte, NC
  - PNG Line 208 HDDs – design and construction of three HDDs in Chowan County, NC
  - PNG Line 323 – 5,000’ replacement of transmission gas pipeline in Hickory, NC

### Education

BS, Textile Materials Science, NC State University 1998

AAS, Surveying Technology, Guilford Technical Community College 2002

MS, Geospatial Information Science, NC State University 2010

### Professional Credentials

Professional Land Surveyor Licenses:

- North Carolina L-4464
- South Carolina 31203
- Tennessee 3337
- Kentucky 4380

Member of North Carolina Society of Surveyors (NCS)

Member of National Society of Professional Surveyors (NSPS)

Past Treasurer/Secretary of NCS Guilford Chapter



## ALAN L. "BUZ" STEELE

### GENERAL SUMMARY:

Forty five plus years of experience in the natural gas and oil transportation and processing industries. Worked for contractors, inspection firms, gas and liquid pipeline companies, engineering firms, as well as owning and operating my own construction company. Expert in personnel management in the field and problem solving. Experienced in all aspects of pipeline and facilities construction and route selection.

### KEY SKILLS:

- Pipeline Construction Management
- Compressor / Meter Station Construction Management
- Tank Farm Construction Management
- DOT / Critical Document Management
- Inspection Management
- Supervision of Field Survey Crews
- GPS Data Collection
- Quality Assurance
- Field Engineering
- Constructability Assessments
- Environmental Assessment
- Interaction with Landowners and Client
- Pipeline Inspection
- Route Identification
- ROW Investigations

### EDUCATION:

High School Graduate

API 1169, TWIC, and Project Specific Safety and Environmental Training courses. Proficient with Bluebeam Revu and most Microsoft Products.

### WORK HISTORY:

#### GULF INTERSTATE ENGINEERING

##### Construction Manager / Chief Inspector

Assigned to Purefield Ingredients to construct 5.6 miles of 6" CO<sub>2</sub> pipeline to sequester CO<sub>2</sub> in Russell County, KS. My duties included supervising the inspection staff, monitoring the contractor's work and insuring the work was completed to the specifications, and insuring all forms and reports were turned in and complete. Compile documents and records required by DOT and assist with governmental onsite audits.

##### Construction Manager / Chief Inspector

Assigned to SiEnergy/Terra Transmission to construct 5.8 miles of 8" natural gas pipeline and a Meter-Regulator Station to service the new Samsung facility located in Williamson County, TX. My duties included supervising the inspection staff, monitoring the contractor's work and insuring the work was completed to the specifications, and insuring all forms and reports were turned in and complete. Compile documents and records required by DOT/RRC and assist with governmental on-site audits.

##### On-Site Representative for the Owner

Act as the Owner's on-site agent and monitor the demolition of a synthetic rubber plant that was built in the 1950's. All debris, which included asbestos, some lead based paint, and very slight instances of PCBs were abated properly and removed from the site by qualified workers. All materials removed were disposed of in an environmentally acceptable manner. I also coordinated the required testing of materials by third-party labs.

16010 Barkers Point Lane, Suite 600  
Houston, TX 77079-9000 USA  
Phone: 713.850.3500  
Fax: 713.850.3566

Resumes are for the use of our firm, Gulf Interstate Field Services, and the named individual or entity to which it is directed and may contain information that is privileged or confidential. It is not to be copied or forwarded to any unauthorized persons.



**APPENDIX B:**  
SCHEDULE OF RATES

# KLEINFELDER 2025/2026 FEE SCHEDULE

Pricing Valid April 2025 through March 2026

## PROFESSIONAL STAFF RATES\*

Professional.....	\$	95/ hour
Staff Professional I.....	\$	105/ hour
Staff Professional II.....	\$	125/ hour
Project Professional.....	\$	165/ hour
Senior Professional.....	\$	180/ hour
Principal Professional.....	\$	215/ hour
Senior Principal Professional.....	\$	235/ hour
Designer/Drafter I.....	\$	75/ hour
Designer/Drafter II.....	\$	85/ hour
Designer/Drafter III.....	\$	95/ hour
Designer/Drafter IV.....	\$	105/ hour
Project Manager I.....	\$	175/ hour
Project Manager II.....	\$	190/ hour
Project Manager III.....	\$	205/ hour
Senior Project Manager.....	\$	220/ hour
Project Controls Professional.....	\$	120/ hour
Senior Project Controls Professional.....	\$	145/ hour

## TECHNICAL STAFF RATES

Technician.....	\$	75/ hour
Senior Technician.....	\$	90/ hour
Inspector.....	\$	80/ hour
Senior Inspector.....	\$	95/ hour
Construction Manager.....	\$	175/ hour

## ADMINISTRATIVE STAFF RATES

Administrative Specialist.....	\$	90/ hour
Senior Administrative Specialist.....	\$	120/ hour
Administrative Supervisor.....	\$	135/ hour
Outside Services & Subcontractors.....		Cost +5%
Mileage.....		IRS Rate

Public works projects or projects receiving public funds may be subject to Prevailing Wage laws. The above rates do not apply to projects subject to prevailing wages. Hourly rates for those projects will be supplied separately.

\* Applies to all professional rates including but not limited to civil, mechanical, chemical, electrical, geotechnical, and environmental engineers; industrial hygienists; geologists; hydrogeologists; hydrologists; and computer specialists.

Hourly rates assume that other direct costs will be billed and reimbursed by the client. Kleinfelder reserves the right to adjust the fee schedule on projects where other direct costs are not reimbursed.

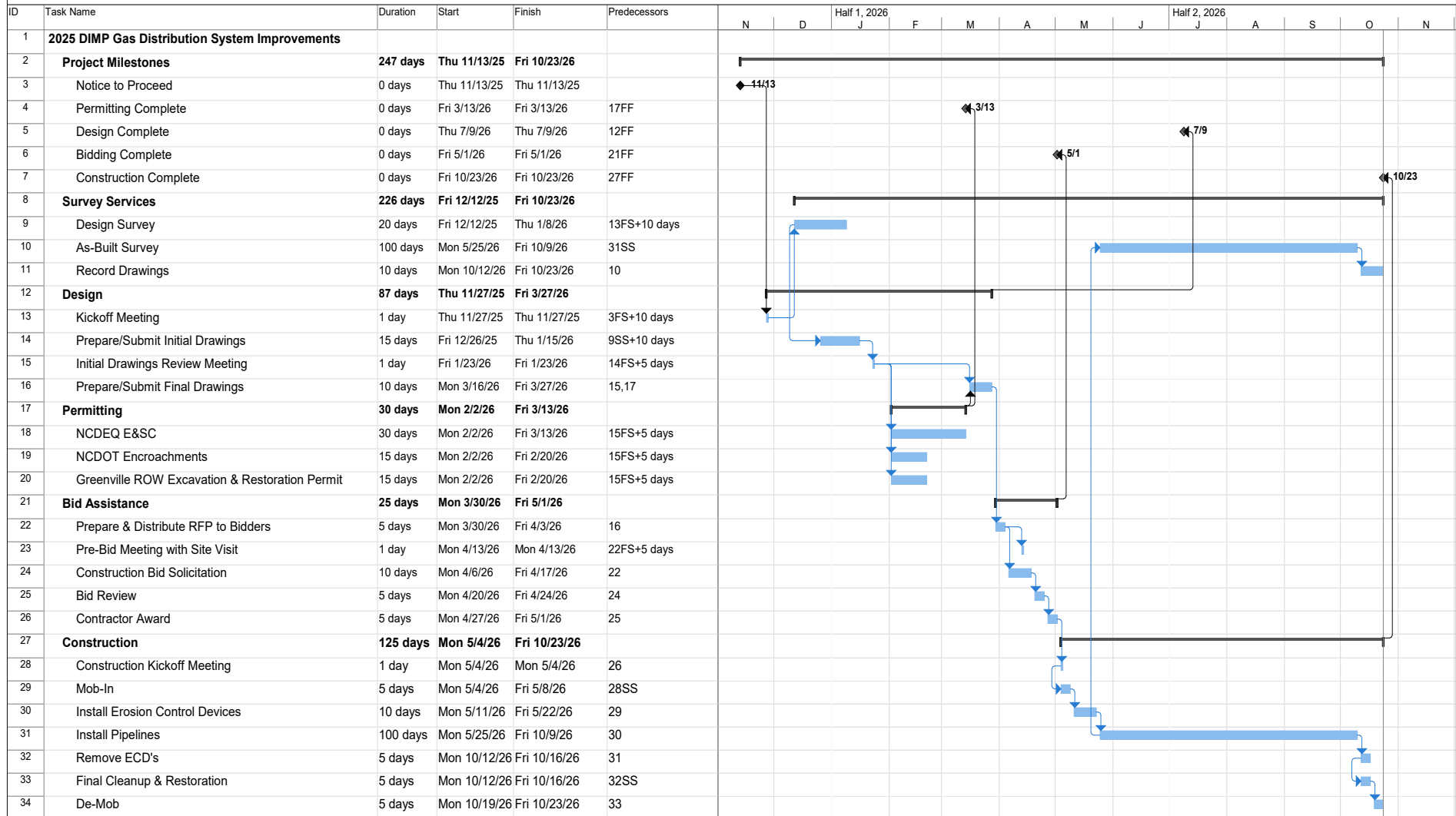


**APPENDIX C:**  
CONCEPTUAL PROJECT  
SCHEDULE

# PROJECT SCHEDULE



## 2025 DIMP Gas Distribution System Improvements Schedule



Project: 2025 DIMP Gas Distribution System Improvements Schedule  
 Status Date: Mon 10/6/25

Task █ Milestone ◆ Summary  Manual Summary  Progress



## **APPENDIX D:** REQUIRED FORMS

## RFQ Acknowledgement and Signature Form

### RFQ No.: 25-59, Engineering Services for 2025 DIMP Gas Distribution System Improvements

The undersigned having carefully examined the location of the proposed work, the local conditions of the place where the work is to be done, the Invitation, the General Conditions, the Specifications and all of the documents for this project, proposes to enter into a contract with Greenville Utilities Commission in Greenville North Carolina perform the work listed in this RFQ, including all of its component parts, and to furnish any and all required labor, materials, equipment, insurance, bonding, taxes, transportation and services required for this project in strict conformity with the plans and specifications prepared, including any Addenda, within the time specified.

#### Addendum Acknowledgement:

The following addendum (addenda) is (are) acknowledged in this RFQ: N/A

#### Acknowledgement and Signature:

1. No Proposal is valid unless signed in ink by the person authorized to make the proposal.
2. I have carefully read, understand and agree to the terms and conditions on all pages of this RFQ. The undersigned agrees to furnish the services stipulated in this RFQ.

#### Respondent's Name and Title:

Company Name: Kleinfelder, Inc.

Address: 200 Regency Forest Dr. Suite 225. Cary, NC 27518

Telephone: 919-755-5011 Fax: \_\_\_\_\_

Email: rparker@kleinfelder.com Cell Number: 919-987-6988

Contractor License # (if applicable): \_\_\_\_\_ Expiration Date: \_\_\_\_\_

Federal Tax Identification Number: 94-1532513

Authorized Signature:  Date: 10/12/2025

---

Attachment 3  
**E-Verify Form**

---

Letter of Compliance to E-Verify for Greenville Utilities Commission. Please complete the form below.

1. I have submitted a bid for contract or desire to enter into a contract with the Greenville Utilities Commission;
2. As part of my duties and responsibilities pursuant to said bid and/or contract, I affirm that I am aware of and in compliance with the requirements of E-Verify, Article 2 of Chapter 64 of the North Carolina General Statutes, to include (mark which applies):
3.  After hiring an employee to work in the United States I verify the work authorization of said employee through E-Verify and retain the record of the verification of work authorization while the employee is employed and for one year thereafter; or
4.  I employ less than twenty-five (25) employees in the State of North Carolina.
5. As part of my duties and responsibilities pursuant to said bid and/or contract, I affirm that to the best of my knowledge and subcontractors employed as a part of this bid and/or contract, are in compliance with the requirements of E-Verify, Article 2 of Chapter 64 of the North Carolina General Statutes, to include (mark which applies):
6.  After hiring an employee to work in the United States the subcontractor verifies the work authorization of said employee through E-Verify and retains the record of the verification of work authorization while the employee is employed and for one year thereafter; or
7.  Employ less than twenty-five (25) employees in the State of North Carolina.

Specify subcontractor: \_\_\_\_\_

Kleinfelder, Inc. (E-Verify # 1374923) (Company Name)

By: Erik Messina, PE (Typed Name)

 (Authorized Signatory)

Design Service Line Lead (Title)

10/12/2025 (Date)

It is certified that this proposal is made in good faith and without collusion or connection with any other person bidding on the same above listed items. It is also certified that this proposal is made in good faith and without collusion or connection with any GUC employee(s).

Certified check or cash for   N/A   or bid bond for   N/A   attached.

Firm Name: Kleinfelder, Inc. Phone: ( 919 ) 755-5011

Address: 200 Regency Forest Dr, Suite 225, Cary, NC 27518

City Cary State NC Zip Code 27518

Fax (\_\_\_\_) \_\_\_\_\_ E-mail rparker@kleinfelder.com

Authorized Official Erik Messina, PE Title Design Service Line Lead

Typed Name



Date 10/12/2025

Signature

**Your Proposal should be received no later than October 14, 2025, 11:00 AM (EST)**