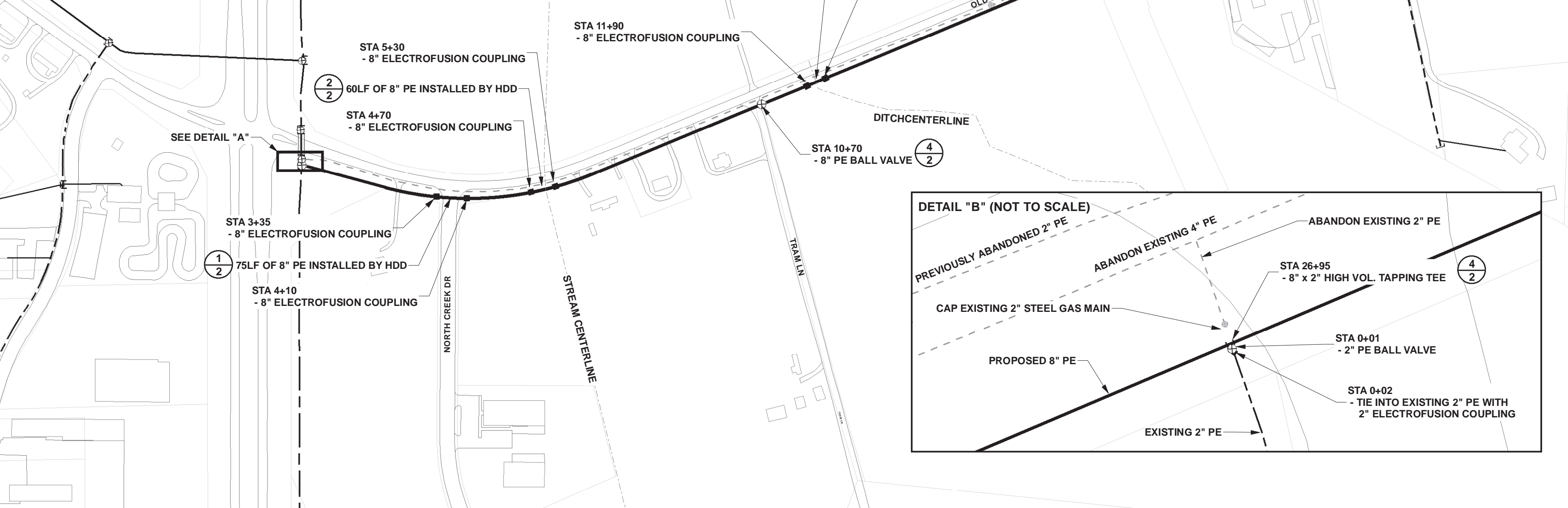
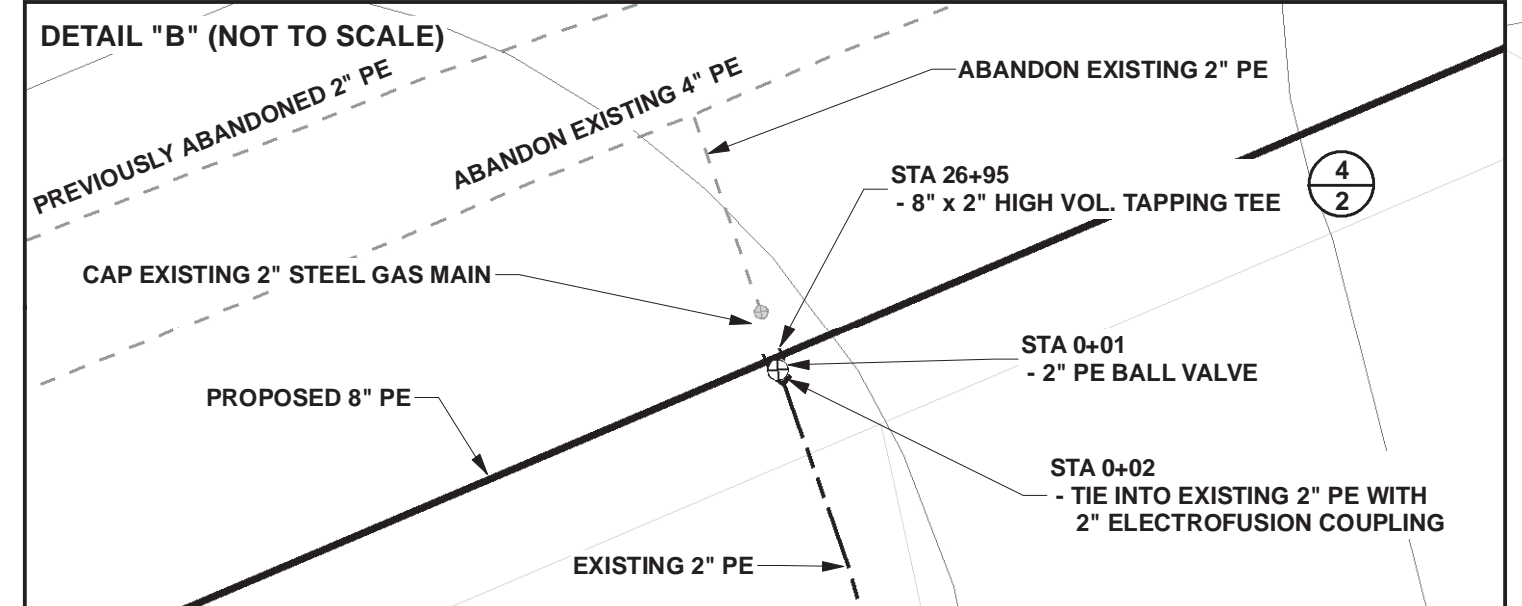
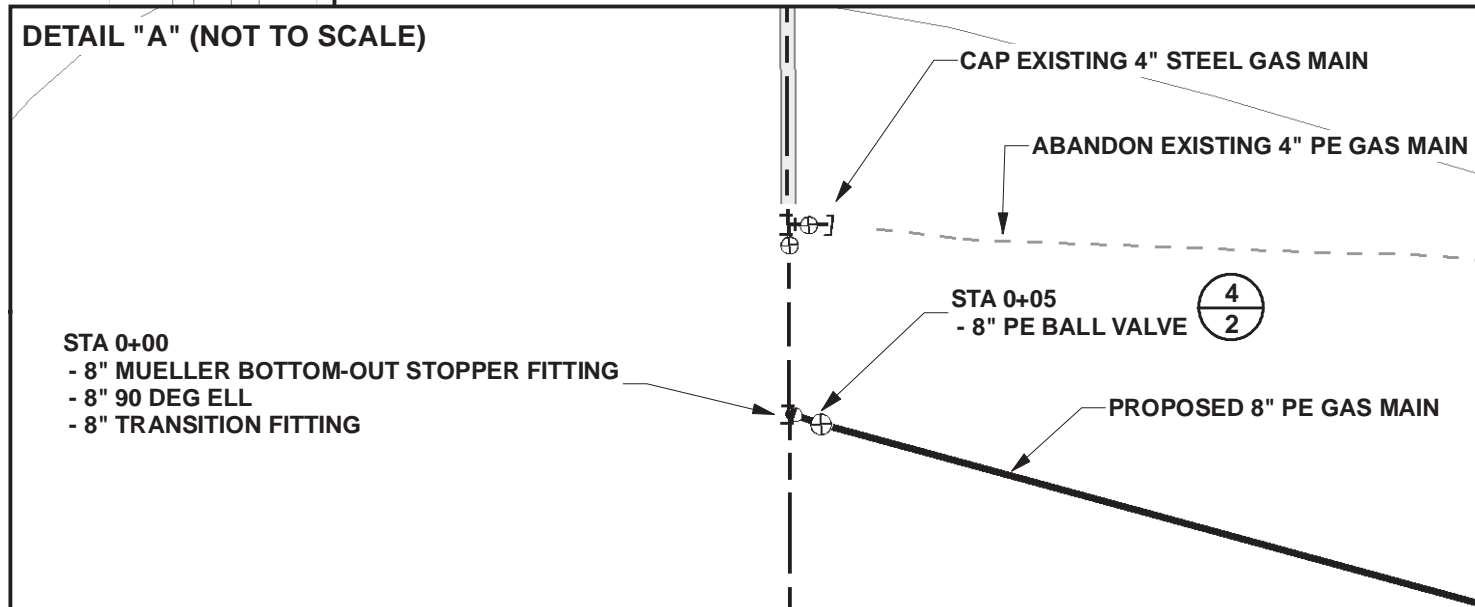
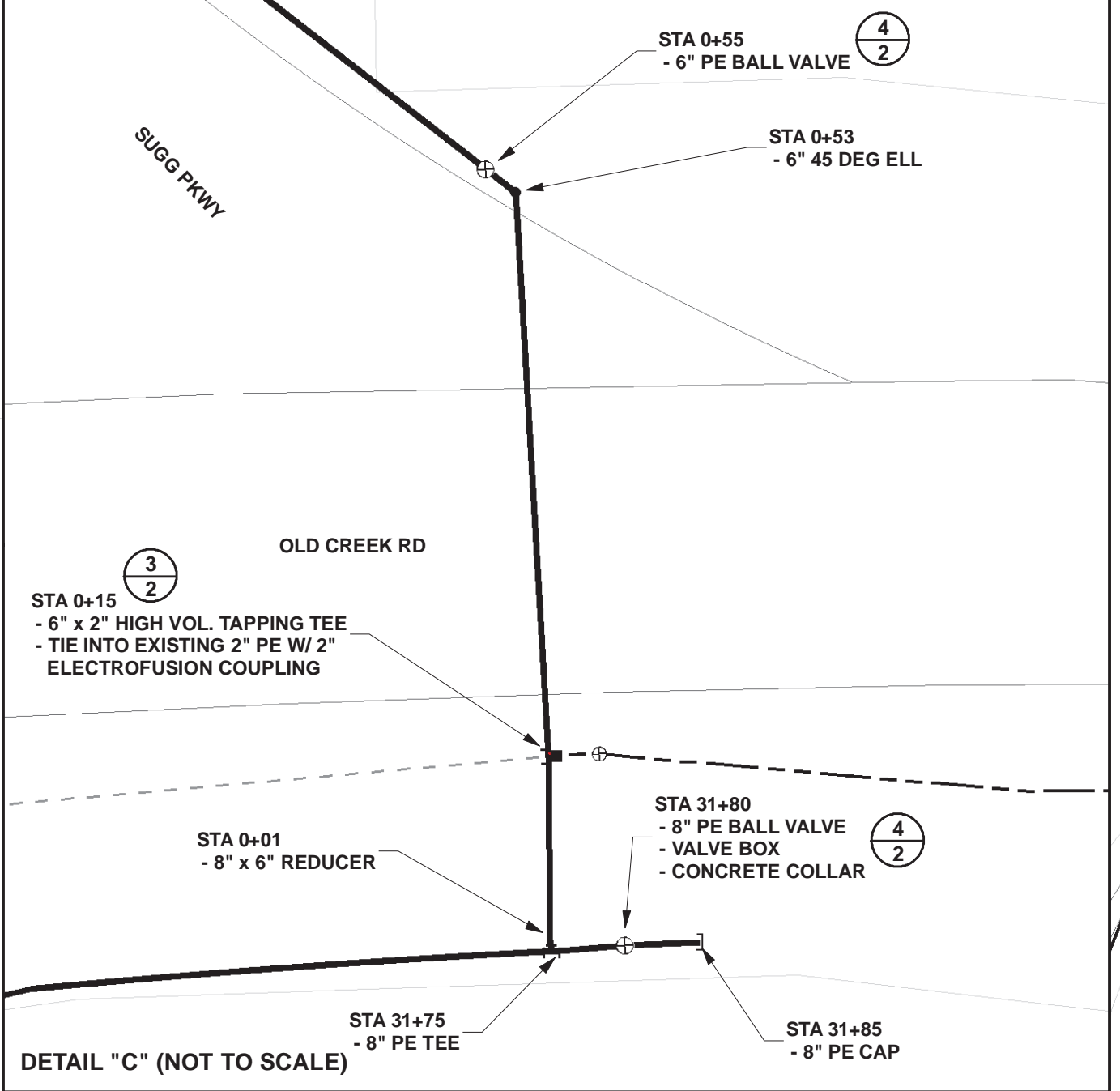




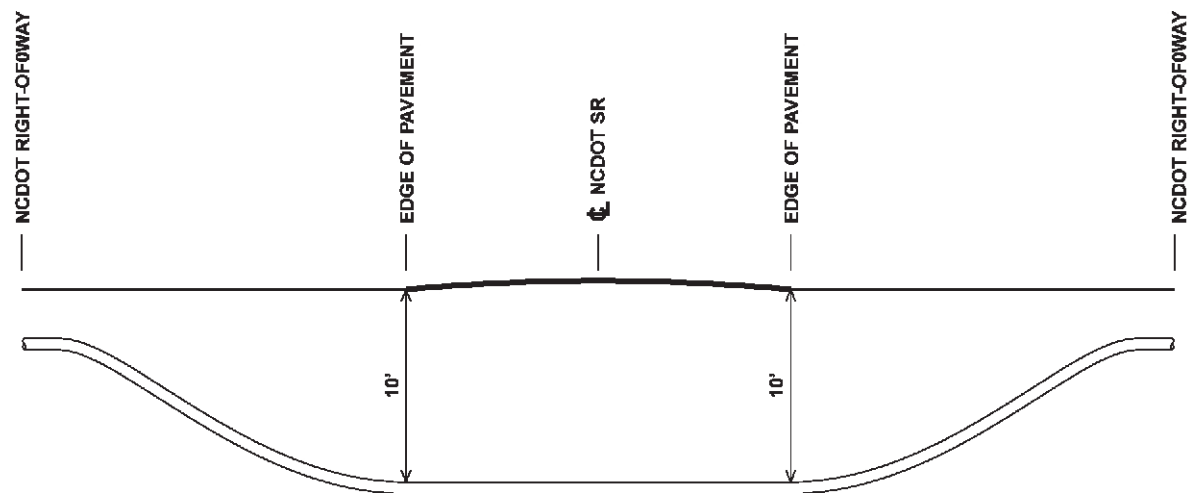
MARTIN LUTHER KING JR HWY - US 264 BYPASS



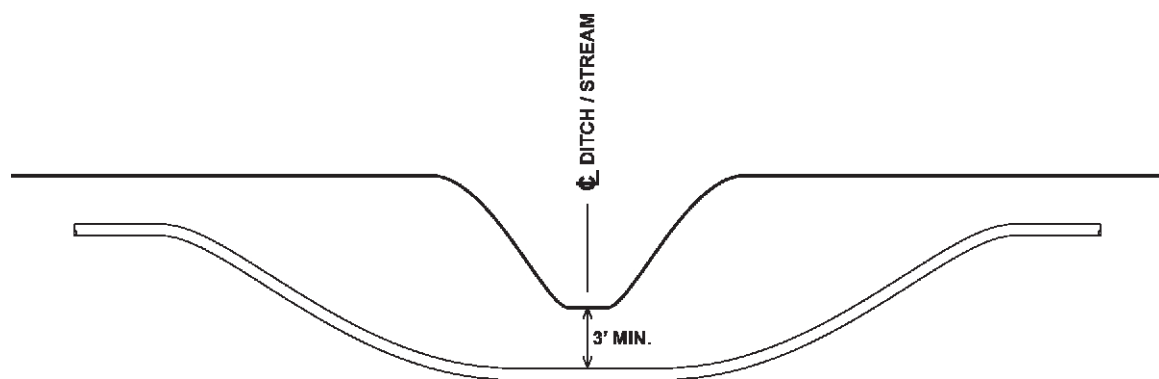
Gas Main Install
OLD CREEK RD.

GREENVILLE PITT COUNTY NORTH CAROLINA

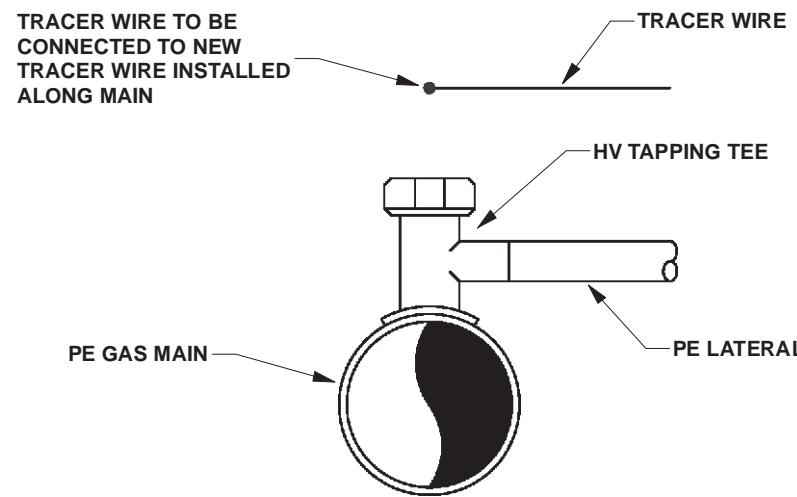
<p>Gas Engineering 801 Mumford Rd Greenville, NC 27835 252-551-1587</p>	Design: JAC	Scale: 1" = 200'
	Drawn: JAC	Work Order #: 1702349
	Approved: FDT	Task #: 2
	Date: 9/30/16	Sheet: 1 of 1



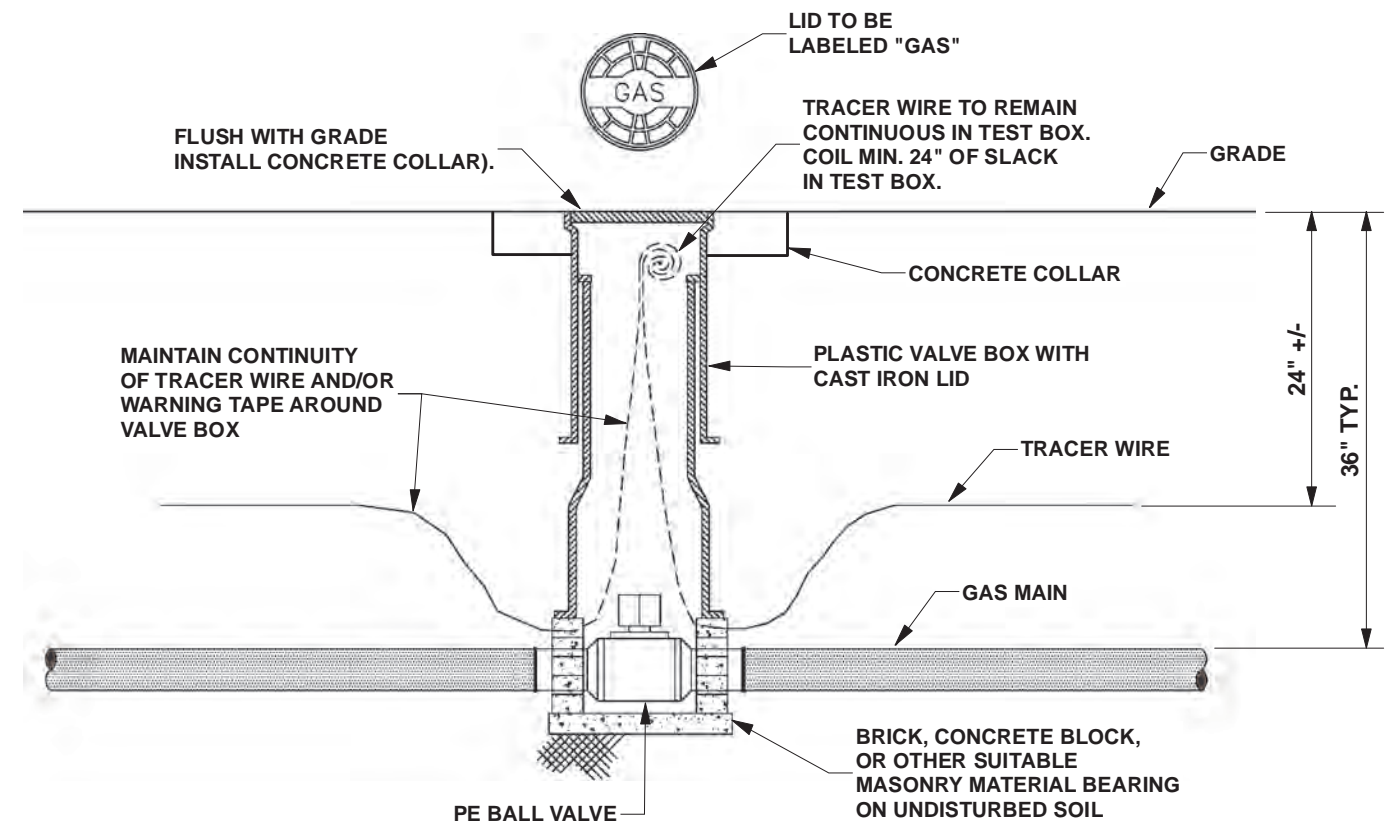
1
2 **TYPICAL HORIZONTAL DIRECTIONAL DRILL**
UNDER STATE MAINTAINED ROAD NOT TO SCALE



2
2 **TYPICAL HORIZONTAL DIRECTIONAL DRILL**
UNDER DITCH / STREAM NOT TO SCALE



3
7 **TYPICAL POLYETHYLENE**
TAPPING TEE INSTALLATION NOT TO SCALE



4
2 **TYPICAL POLYETHYLENE GAS VALVE INSTALLATION**
NOT TO SCALE

Details
OLD CREEK RD.

GREENVILLE	PITT COUNTY	NORTH CAROLINA
<p style="font-size: 8px; margin-top: 5px;">Gas Engineering 801 Mumford Rd Greenville, NC 27835 252-551-1587</p>	Design: JAC	Scale: AS SHOWN
	Drawn: JAC	Work Order #: 1702349
	Approved: FDT	Task #: 2
	Date: 9/20/16	Sheet: 2 of 2