

QUESTIONS AND ANSWERS

FOR: 20-04 RE-BID FOR TWO (2) 60' AERIAL TOWER UNIT MOUNTED

WITH UTILITY LINE BODY AND 1,250 LBS. MATERIAL HANDLING PACKAGE

JANUARY 29, 2020

Question:

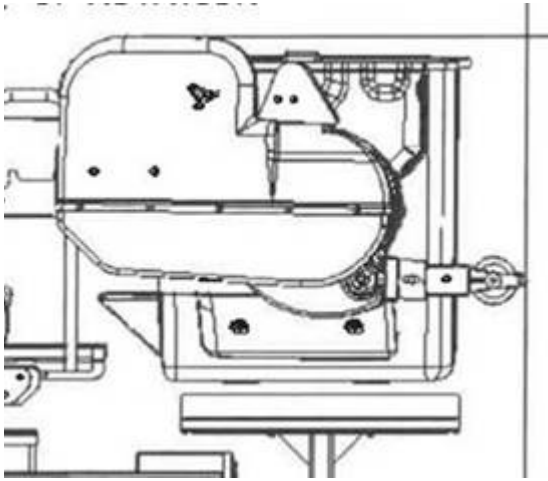
A 60' material handler boom mounted winch with removable jib shall include the following:

- ☐ 24" X 48" X 42" side mounted basket, 600 lb. capacity with 90° rotator
- ☐ Sub-frame with one set of auxiliary outriggers (optional)
- ☐ 70 ft. of 1/2 inch double braided synthetic rope
- ☐ Auxiliary winch line control valve at turntable
- ☐ Minimum load lifting capacities shall be 1,250 lbs.
- ☐ Bidder shall supply load capacity charts
- ☐ Hastings 12666 Conductor Holder
- ☐ Swivel hook for winch rope (Altec 23421042 or equal)

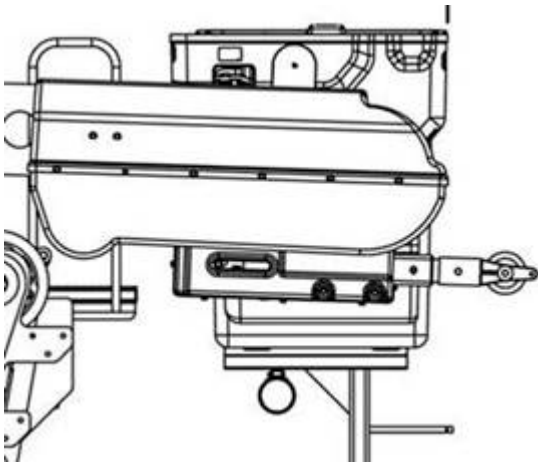
Hydraulic extended underslung jib/winch. Provide with the winch line payout over top of the jib.

The current jib that GUC has is a manual extension/hydraulic articulation with the winch on top of the boom. A hydraulically extending and articulating jib is available but not with the winch on top of the boom as requested. Please see pictures below. Please let me know which jib package you would prefer. Thanks

Current GUC Configuration:



What is currently in the bid spec:



Answer:

The manually extended, hydraulic articulating jib with the winch on top of the boom is desired. The description will be corrected in future bid packages.