

RFQ # 25-59
Due Date: October 14, 2025
11:00 AM

Statement of Qualifications
engineering services for

2025 DIMP
Gas Distribution System Improvements

For



Submitted by



TABLE OF CONTENTS

	PAGE
1. CORPORATE PROFILE History of Our Firm Areas of Service Employment Profile Why Rivers?	1
2. STATEMENT OF PROFESSIONAL QUALIFICATIONS The Rivers Project Team Rivers' Key Team Member Roles Key Team Member Resumes	3
3. SUMMARY OF RELEVANT COMPANY EXPERTISE Technical Capabilities Similar Project Experience	11
4. SUB-CONSULTANTS General Base Mapping Environmentally Sensitive Areas Subsurface Utility Exploration Subsurface Geotechnical Investigation	18
5. HOURLY RATES OF PERSONNEL	18
6. LOCATION OF OFFICES & KEY PROJECT STAFF OFFICES FROM WHERE WORK WILL BE PERFORMED	18
7. PROJECT SCHEDULE TENTATIVE PROJECT SCHEDULE	19
8. SPECIAL CONSIDERATIONS PROJECT APPROACH	21
9. PROFESSIONAL REFERENCES	23
10. OTHER CONSIDERATIONS PROXIMITY TO PROJECT SITE GEOGRAPHIC FAMILIARITY SYSTEM FAMILIARITY RESPONSIVENESS TO CLIENT NEEDS QUALITY CONTROL & ASSURANCE THROUGH COMMUNICATION COST CONTROL PROJECT SCHEDULE MAINTENANCE PROTECTION AGAINST DEFECTS / DEFICIENCIES	25

ATTACHMENTS: GUC CERTIFICATIONS (3)

1. Corporate Profile

Corporate Contact

Fred Stowe, P.E.

Sr. Project Manager

Phone: 252-752-4135 (office)

Phone: 252-531-2238 (mobile)

Email:

fstowe@riversandassociates.com

Corporate Office Address

107 East Second Street

Greenville, NC 27858

PO Box 929

Greenville, NC 27835

Phone: 252-752-4135

Fax: 252-752-3974

Branch Office Address

Six Forks Place III

353 E. Six Forks Rd., Suite 230

Raleigh, NC 27609

Phone: 919-594-1626

Our Project Team Includes:

- Registered Engineers
- Registered Gas Distribution Professionals
- Registered Land Surveyors
- Subsurface Utility Engineering Professionals

FIRM LICENSURE

NC BELS Lic. # F-0334

NC BOLA Lic. # C-312

SC-ENG Lic. # 5617

VA-ENG. Lic. # 407003745

www.riversandassociates.com



Rivers' corporate office located in Greenville, North Carolina

History of Our Firm

Rivers & Associates, Inc. (Rivers) is a certified Small Professional Service Firm (SPSF) business corporation owned by ten employees dedicated to providing responsive, quality professional service at a competitive price. The firm was formed by Thomas W. Rivers from the company started by Henry L. Rivers in Greenville, NC in 1918. Initially known as Henry L. Rivers, Consulting Engineers, the company was originally formed to provide municipal engineering and drainage engineering services. The company incorporated in 1959 with the North Carolina Secretary of State under the name Rivers & Associates, Inc. and was structured as a Sub-Chapter S corporation. Since that time the company has grown and the areas of service have expanded. Although our firm offers other professional services today that complement our core services, our foundation remains engineering services for public works and utility infrastructure.

Areas of Service

Registered to provide professional services in the States of North Carolina, South Carolina and Virginia, Rivers provides engineering, planning, surveying and landscape architecture services on a variety of projects including water / wastewater systems and treatment plants, natural gas storage and distribution, roads and streetscapes, drainage and stormwater management, urban design and revitalization, parks and recreational facilities, marinas and waterfront development, as well as site developments and buildings. Our clientele portfolio includes local, state and federal government, private developers, industrial and commercial clients.

Our firm is licensed to provide professional services in engineering, surveying and landscape architecture. We also provide professional planning, urban design, construction management and inspection services. Civil and environmental engineering, planning, surveying and landscape architecture services are provided by staff members who are registered or certified to provide professional services.



In addition to project planning, design and construction administration services, Rivers offers complete project administration services including funding applications and administration as well as diversified services to meet our client’s special needs that occur during routine administration of system operation, infrastructure asset assessment, assistance with local government policy formulation, long-range planning, annual budgeting, rate studies and comprehensive planning studies.

Our vast knowledge and experience is valued by clients, as a diversified consulting firm that anticipates and plans for items complementary to the actual project. This added value brought to the project process enhances opportunities to optimize engineered solutions and operations of public utility systems including water treatment, pumping and distribution; gas distribution; and wastewater collection, pumping, treatment and disposal.

Employment Profile

Civil Engineers	19	Planners	2
Landscape Architects	4	Surveyors	8
Draftsmen	11	Administrative	7
Construction Inspectors	11	TOTAL	62

Why Rivers?

Rivers is a regional leader in utility infrastructure planning and engineering, having served numerous municipal and county clients with comprehensive planning and design for new and renovated facilities.

As a small private business corporation locally owned by employees dedicated to providing clients with responsive, quality engineering services at a fair price, principals, officers, directors and managers of the firm are involved directly in day-to-day client contact, project administration and detailed planning and design. This provides the client with assurance that the experience of the firm's senior staff will have "hands-on" involvement in project planning, design and construction administration while taking advantage of mid- and junior level staff for routine task assignments.

We take pride in our commitment to client responsiveness which results in approximately 80% of our business being from repeat clientele.

Our design teams utilize the most up-to-date versions of AutoCAD, Carlson, MicroStation and ArcMAP software packages to provide readily accessible platforms for graphic information and design as well as to prepare presentation graphics and construction documents, providing our clients the most efficient use of our resources.

Located in Greenville, Rivers’ corporate office and Project Team are located within close proximity of the Project area, and easily accessible to GUC staff.

Finally, our Project Team is highly qualified to provide the requested services. This team has successfully served the GUC Gas Department of a number of previous gas main extension and/or relocation projects and is ready to serve once again. GUC should select the Rivers Team for the following important reasons:

- **Vast Experience** designing intermediate pressure natural gas distribution projects for GUC.
- **Expertise** designing pressure pipeline infrastructure including horizontal directional drilling installations.
- **Commitment to Responsiveness** achieved through aggressive project scheduling and client communication.
- **Local Resources** providing a price competitive advantage to GUC.
- **Close Proximity** to the project and GUC staff.

Based in our Greenville office, Rivers’ Project Team is located within close proximity of the Project area, easily accessible to GUC staff.

2. Statement of Professional Qualifications

Services to Be Provided

- Surveying & Base Mapping
- Design
- Cost Opinions
- Utility Coordination
- Permitting & Encroachments
- Construction & Bid Documents
- Bidding / Negotiations
- Construction Admin.
- Construction Observation
- Record Drawings



*Intercoastal Waterway, Water Main Crossing
Horizontal Directional Drill, Pamlico County, NC*

The Rivers Project Team

Rivers' Project Team is well trained and experienced to accomplish their assigned tasks. Personnel to be assigned to the project are experienced in: corridor topographic survey & planimetric mapping; easement survey & mapping; utility coordination and conflict resolution design; gas distribution design; regulatory permitting; and statutory bidding requirements.

Mr. Fred Stowe, P.E. will serve as Project Manager. Fred has over thirty years utility pipeline infrastructure design experience, including design of intermediate pressure gas distribution mains for Greenville Utilities Commission.

Rivers' Key Team Member Roles

The organizational chart shown on this page identifies all Key Project Team Members and their respective roles for the project to design the proposed gas system improvement project.

This Team is immediately available to begin work and successfully complete the project.

Project Principal	Greg Churchill, PE
Project Manager	Fred Stowe, PE
Project Engineer	Seth Anderson, PE
Survey Manager	Patrick H. Hartman, PLS
CAD Designer	Mike Luszc
Subsurface Utility Eng.	Logan Derberry Taylor, Wiseman & Taylor

Key Team Member Resumes

The following pages include individual resumes for each Key Project Team member. Included within the resumes are highlights of selected projects that are similar, or contained similar aspects to, the proposed project.

Greg Churchill, P.E.

Project Principal



As President of Rivers & Associates, Greg Churchill holds direct management responsibility for corporate operations, business development, financial management and staff performance. He also serves as Senior Project Manager and Principal-in-Charge for various municipal infrastructure projects. His thirty plus years of engineering design and management experience include civil engineering studies, preliminary plans, construction drawings, contracts, specifications, permitting, cost estimating & contract administration. He is equally proficient in the design of water treatment plants, wells, ground storage tanks, water distribution systems, wastewater treatment plants, sewer collection systems, sewer pump stations & force mains, natural gas distribution, storm drainage & detention facilities, roadways & site plans.

Academic Credentials

M.S. - Engineering, North Carolina State University, 1999

B.S. - Civil Engineering, North Carolina State University, 1986

Employment History

1986 - Present - Rivers & Associates, Inc.

Professional Registration

Professional Engineer, NC (#22987)

Associations & Affiliations

American Society of Engineers
 American Water Works Association
 East Carolina University Engineering Advisory Board
 National Society of Professional Engineers
 Professional Engineers of North Carolina

Selected Experience

Tenth Street Connector Utility Relocations for NCDOT TIP U-3315, Greenville, NC: Senior Project Manager responsible for the design and environmental permitting for relocation of approximately: 12,400 LF of 2"-12" water main; 275 LF of 8"-10" gravity sewer main; 6,300 LF of 2"-8" PE and steel gas distribution main; 200 LF of 24" encasement pipe and 200 LF of 24" trenchless installation; various lateral & service reconnects; and associated appurtenances. This project is part of the installation of the new multi-lane 10th Street connector between the center city and the medical district including an elevated crossing of Dickinson Avenue and CSX railroad being constructed by NCDOT.

US HWY 70 Utilities Relocation for NCDOT TIP R-3307, Beaufort, NC: Senior Project Manager responsible for design and permitting for relocation of approximately 3.7 miles of water and sewer main including two 1,100 LF directional bores, force main and gravity sewer, as well as replacement of Pump Station No. 10. Construction of this project preceded the installation of the US HWY 70 Bypass around the Town of Beaufort being constructed by NCDOT.

Pressure Sanitary Sewer Improvements, Chocowinity, NC: Senior Project Manager responsible for design, permitting, and construction administration services to expand capacity of the existing Septic Tank Effluent Pump (STEP) pressure collection system. The project includes installation of a new 120,000 gallon reinforced concrete Equalization Basin at the main Bragaw Lane Pump Station, installation of the new Blounts Creek Regional Pump Station, approximately 14,000 LF of 6" - 14" force mains and appurtenances including 1,920 LF of 10" - 12" HDPE directional bores. The project includes mixing/odor control and electrical improvements at both pump station sites, as well as a radio telemetry/ SCADA system for monitoring and alarm communication for five (5) pump station sites.

Town Creek Culvert Drainage Project, Greenville, NC: Senior Project Manager responsible for performance of 90% construction document Quality Assurance / Quality Control review as a member of a multi-consultant team for project improvements to the primary drainage interceptor system serving the central business district of the city including approximately 1,500 LF of open-channel and over 3,000 LF of closed-pipe improvements up to 8' x 10' box culvert in the densely development urban core, including relocation and replacement of various water, sewer & gas utilities.

Water System Modeling, Washington County, NC: Project Principal for evaluation of water system improvement alternatives to resolve low pressure concerns in the north-central portion of the county-wide water distribution system. Evaluation tasks included hydraulic modeling, cost estimating and written report of findings. Selected alternative included new 550 GPM BPS and 37,500 LF of 12" transmission main, and 5,200 LF of 6" water main.

Fred Stowe, P.E.

Project Manager



Fred Stowe is a professional engineer that is also a partner in the firm with over thirty years wide ranging civil and environmental engineering experience. He has extensive experience in the design of water, wastewater, stormwater and gas projects including water supply wells, water distribution systems, wastewater collection systems, water and wastewater pumping stations, storm drainage systems and intermediate pressure natural gas distribution mains. His experience includes budgeting, scheduling, engineering studies, permitting, contracts and project specifications, cost estimates, and construction contract administration and inspection as well as monitoring of projects during the project life cycle.

Selected Experience

VOA Site C Road Gas Distribution Enhancements, Greenville Utilities Commission, Greenville, NC: Project Manager for design of natural gas main extension consisting of approximately 21,000 LF of 4-inch intermediate pressure medium-density polyethylene (PE) natural gas distribution main to loop the existing 4-inch gas main terminus on VOA Site C Road with the existing 4-inch gas main on Stantonsburg Road at its intersection with VOA Site C Road, thus providing an increased reliability of service without disruption for approximately 1,200 existing customers. The project included crossing under the controlled access right-of-way of US Highway 264 beyond the footprint of the US 264 / VOA Site C Road overpass bridge structures. The project required the crossing of Pine Log Branch utilizing a directional bore.

Thomas Langston Road Gas Distribution System Enhancements, Greenville Utilities Commission, Greenville, NC: Project Manager for design of a natural gas main extension consisting of approximately 14,200 LF of 8" medium-density polyethylene (PE) natural gas main pipeline installed by open trench method, 3,800 LF of 8" PE gas main pipeline installed by horizontal directional drilling under environmentally sensitive areas, 65 LF of 8" PE gas main pipeline installed via jack and bore 12" steel casing under NCDOT roadway, miscellaneous smaller diameter PE and steel piping interconnects, gate station interconnection and associated appurtenances along an existing transmission power line corridor from an existing gate station near US Highway 13 to NC Highway 11.

10th Street / Greenville Blvd. Natural Gas Main Relocation, Greenville Utilities Commission, Greenville, NC: Project Manager responsible for design and permitting of natural gas main relocation consisting of approximately 200 linear feet of 6" PE natural gas pipeline installed by direct burial and through 100 linear feet of 12" dry bore steel casing under Greenville Blvd. adjacent to the 10th Street intersection.

Southwest Bypass 8" Steel Natural Gas Main Relocation, Greenville Utilities Commission, Greenville, NC: Project Manager responsible for design and permitting of natural gas main relocation consisting of approximately 8,900 linear feet of 8" steel natural gas pipeline and associated appurtenances including 1,125 linear feet of 8" steel natural gas pipeline installed by horizontal directional drilling along the proposed US 13/NC 11 Southwest Bypass corridor.

Old River Road Natural Gas Main Extension, Greenville Utilities Commission, Greenville, NC: Project Manager responsible for design and permitting of a natural gas main extension consisting of approximately 10,000 linear feet of 8" PE and associated appurtenances along Old River Road (SR 1401).

Old River Road Water Main Extension, Greenville Utilities Commission, Greenville, NC: Project Manager responsible for design, permitting, bidding and construction administration of approximately 18,500 Lf of 12" water main and appurtenances along Old River Road and Barrus Construction Road.

Academic Credentials

B.S. - Civil Engineering, North Carolina State University, 1986

Employment History

1995 - Present - Rivers & Associates, Inc.
1994 - 1995 - Green Engineering
1986 - 1994 - Rivers & Associates, Inc.

Professional Registration

Professional Engineer, NC (#17695)
NCDOT Level III Certified Erosion & Sediment Control
Plan Designer (#3522)
Registered Gas Distribution Professional

Associations & Affiliations

North Carolina Rural Water Association

Seth Anderson, PE

Project Engineer



Seth Anderson is a Project Engineer in the Municipal Engineering Department where he is responsible for preparation of engineering studies, calculations, design, construction drawings, technical specifications and contract documents associated with public works and utility infrastructure projects. Duties also include hydraulic analysis, permitting, cost estimating and construction administration duties. His experience includes hydrologic calculations and pipe culvert sizing/analysis, hydraulic modeling using WaterCAD software, erosion and sedimentation control computations and design, field work associated with sewer system evaluation surveys, construction observation, preparation of funding applications, etc.

Academic Credentials

B.S. - Mechanical Engineering, North Carolina State University, 2013

Employment History

2013 - Present - Rivers & Associates, Inc.

Professional Registration

Professional Engineer, NC (#46865)
 NCDOT Level III Certified Erosion & Sediment Control
 Plan Designer (#4155)
 Registered Gas Distribution Professional, 2015

Selected Experience

VOA Site C Road Gas Distribution Enhancements, Greenville Utilities Commission, Greenville, NC: Design Engineer for design of natural gas main extension consisting of approximately 21,000 LF of 4-inch intermediate pressure medium-density polyethylene (PE) natural gas distribution main to loop the existing 4-inch gas main terminus on VOA Site C Road with the existing 4-inch gas main on Stantonsburg Road at its intersection with VOA Site C Road, thus providing an increased reliability of service without disruption for approximately 1,200 existing customers. The project included crossing under the controlled access right-of-way of US Highway 264 beyond the footprint of the US 264 / VOA Site C Road overpass bridge structures. The project required the crossing of Pine Log Branch utilizing a directional bore.

Thomas Langston Road Gas Distribution System Enhancements, Greenville Utilities Commission, Greenville, NC: Design Engineer assisting with design of a natural gas main extension consisting of approximately 14,200 LF of 8" medium-density polyethylene (PE) natural gas main pipeline installed by open trench method, 3,800 LF of 8" PE gas main pipeline installed by horizontal directional drilling under environmentally sensitive areas, 65 LF of 8" PE gas main pipeline installed via jack and bore 12" steel casing under NCDOT roadway, miscellaneous smaller diameter PE and steel piping interconnects, gate station interconnection and associated appurtenances along an existing transmission power line corridor from an existing gate station near US Highway 13 to NC Highway 11.

10th Street / Greenville Blvd. Natural Gas Main Relocation, Greenville Utilities Commission, Greenville, NC: Project Engineer for design and permitting of natural gas main relocation consisting of approximately 200 linear feet of 6" PE natural gas pipeline installed by direct burial and through 100 linear feet of 12" dry bore steel casing under Greenville Blvd. adjacent to the 10th Street intersection.

Southwest Bypass 8" Steel Natural Gas Main Relocation, Greenville Utilities Commission, Greenville, NC: Design Engineer assisting with design of a natural gas main relocation consisting of approximately 8,900 linear feet of 8" steel natural gas pipeline and associated appurtenances including 1,125 linear feet of 8" steel natural gas pipeline installed by horizontal directional drilling along the proposed Southwest Bypass in Pitt County, North Carolina.

Old River Road Natural Gas Main Extension, Greenville Utilities Commission, Greenville, NC: Design Engineer assisting with design of a natural gas main extension consisting of approximately 10,000 linear feet of 8" PE and associated appurtenances along Old River Road (SR 1401) in Greenville, North Carolina.

Patrick W. Hartman, PLS, CFPS

Survey Project Manager



Patrick Hartman will be responsible for overseeing project surveying needs as Manager of River's Surveying Department. In this role, he will coordinate all required project surveys. He is a Professional Land Surveyor whose work experience includes survey grade GPS, wetland surveys, topographic surveys, boundary surveys, residential platting, utility right-of-way mapping, road

right-of-way mapping, residential construction surveying, storm drainage and utility as-builts, and physical/as-built/loan surveys. He has extensive experience with all surveying needs for civil/site and infrastructure development including boundary survey, topographic survey, easement surveys, final platting, construction staking and as-builts.

Selected Experience

VOA Site C Road Gas Distribution Enhancements, Greenville Utilities Commission, Greenville, NC:

Project Survey Manager responsible for estimating, planning and meeting the project schedule for 4-mile corridor survey for natural gas main extension. Project tasks included establishing horizontal and vertical control on current State datum's, setting of aerial panels and coordination with aerial contractor for collection of planimetric and topographic information within the corridor limits, including supplemental traditional surveys in obscured areas.

Thomas Langston Road Gas Distribution System Enhancements, Greenville Utilities Commission, Greenville, NC:

Project Survey Manager responsible for estimating, planning and meeting the project schedule for 3.6-mile corridor survey for natural gas main extension. Project tasks included establishing horizontal and vertical control on current State datum's, setting of aerial panels and coordination with aerial contractor for collection of planimetric and topographic information within the corridor limits, including supplemental traditional surveys in obscured areas.

Old River Road Natural Gas Main Extension, Greenville Utilities Commission, Greenville, NC: Survey Project Manager responsible for partial topographic survey at critical locations for horizontal/vertical design for 10,000 LF of 8" PE natural gas main extension.

Pitt Street Natural Gas Main Extension, Greenville Utilities Commission, Greenville, NC: Survey Project Manager responsible for topographic survey for horizontal/vertical design for 750 LF of 2" steel replacement natural gas main under multiple railroad tracks.

Old Tar Road Natural Gas Main Extension, Greenville Utilities Commission, Greenville, NC: Survey Project Manager responsible for limited topographic survey for horizontal/vertical design for 4,500 LF of 6" PE gas main extension.

Old Pactolus Road Natural Gas Main Extension, Greenville Utilities Commission, Greenville, NC: Survey Project Manager responsible for limited topographic survey for horizontal/vertical design for 10,400 LF of 6" PE gas main extension.

Academic Credentials

B.A. - History, University of North Carolina at Wilmington, 1991

A.A.S. - Civil Engineering Technology, Central Piedmont Community College, 1997

A.A.S. - Surveying Technology, Central Piedmont Community College, 1997

Employment History

2004-Present - Rivers & Associates, Inc.

8 years - Harris Engineering

2 months - Central Piedmont Community College

2 years - Jack Christian & Associates Surveyors

10 months - Northstar Mapping Service

Professional Registration

Professional Land Surveyor, NC (# L- 4262), 2000

Certified Flood Plain Surveyor, (NC-102), 2006

Associations & Affiliations

North Carolina Society of Surveyors

Mike Luszczyk, Designer

CAD Designer



With over twenty years experience, Mike Luszczyk is a highly qualified Designer and Resident Project Representative working with all aspects of municipal civil engineering projects. His experience includes surveying projects requiring survey mapping and computations for easements and topographic surveys; horizontal and vertical alignment for streets; calculations of grades, and elevations and preparation of final plans for water and sanitary sewer systems. He is also experienced with data acquisition and development of utility asset inventory digital mapping files utilizing GPS surveying techniques with Autocad and ArcGIS mapping software. He has extensive experience designing and providing resident inspection of network piping systems for water distribution/transmission, wastewater collection and gas distribution.

Academic Credentials

B.S. - Construction Management, East Carolina University, 1999
A.A.S. - Architectural Technology, Pitt Community College, 1997

Employment History

2000 - Present - Rivers & Associates, Inc.
1998 - 2000 - Rivers & Associates, Inc. (part-time)

Certification

ArcGIS Editing & Analysis Training
ArcGIS Model Builder Training

Selected Experience

VOA Site C Road Gas Distribution Enhancements, Greenville Utilities Commission, Greenville, NC: CAD Designer for design of natural gas main extension consisting of approximately 21,000 LF of 4-inch intermediate pressure medium-density polyethylene (PE) natural gas distribution main to loop the existing 4-inch gas main terminus on VOA Site C Road with the existing 4-inch gas main on Stantonsburg Road at its intersection with VOA Site C Road, thus providing an increased reliability of service without disruption for approximately 1,200 existing customers. The project included crossing under the controlled access right-of-way of US Highway 264 beyond the footprint of the US 264 / VOA Site C Road overpass bridge structures. The project required the crossing of Pine Log Branch utilizing a directional bore.

Thomas Langston Road Gas Distribution System Enhancements, Greenville Utilities Commission, Greenville, NC: CAD Designer for design of a natural gas main extension consisting of approximately 14,200 LF of 8" medium-density polyethylene (PE) natural gas main pipeline installed by open trench method, 3,800 LF of 8" PE gas main pipeline installed by horizontal directional drilling under environmentally sensitive areas, 65 LF of 8" PE gas main pipeline installed via jack and bore 12" steel casing under NCDOT roadway, miscellaneous smaller diameter PE and steel piping interconnects, gate station interconnection and associated appurtenances along an existing transmission power line corridor from an existing gate station near US Highway 13 to NC Highway 11.

Southwest Bypass 8" Steel Natural Gas Main Relocation, Greenville Utilities Commission, Greenville, NC: CAD Designer for design of a natural gas main relocation consisting of approximately 8,900 LF of 8" steel natural gas pipeline and associated appurtenances including 1,125 LF of 8" steel natural gas pipeline installed by horizontal directional drilling along the proposed Southwest Bypass corridor.

Old River Road Natural Gas Main Extension, Greenville Utilities Commission, Greenville, NC: CAD Designer for design of a natural gas main extension consisting of approximately 10,000 LF of 8" PE and associated appurtenances along SR 1401.

Eaton Ferry Road (NC 903) Bridge Crossing, Water and Sewer District No. 3, Warren County, NC: CAD Designer for design of 1,200 LF of 8" restrained joint DIP water main attached to the Eaton's Ferry Bridge, 3,550 LF of 8" PVC and 165 LF of 8" restrained joint DIP water main installed on the causeway, and associated appurtenances.

Bridge No. 219 Water Main Relocation, Eastern Pines Water Corporation, Pitt County, NC: CAD Designer for design of a water main relocation consisting of approximately 500 linear feet of 6" HDPE water main installed by directional bore, 515 linear feet of 4" restrained joint DIP water main and appurtenances associated with NCDOT bridge replacement on SR 1726 Portertown Road.

Logan Derberry

Subsurface Utility Engineering Project Manager



Mr. Derberry has been with Taylor, Wiseman & Taylor for 12 years and has extensive experience in the Subsurface Utility Engineering field, encompassing project management of Level A, B, C, and D projects. He has served as a Project Coordinator on NCDOT SUE Projects throughout the State. Mr. Derberry has worked on SUE projects in North Carolina, South Carolina, Georgia, Washington DC, Ohio, Virginia, West Virginia, and Tennessee. Logan successfully is the SUE Project Manager for all SUE projects originating out of TWT's Charlotte and Apex office. Mr. Derberry's experience includes managing Level A, B, C and D SUE projects, client interaction, designating, surveying, developing training procedures, JSA's, proposal estimates, and employee training.

Selected Experience

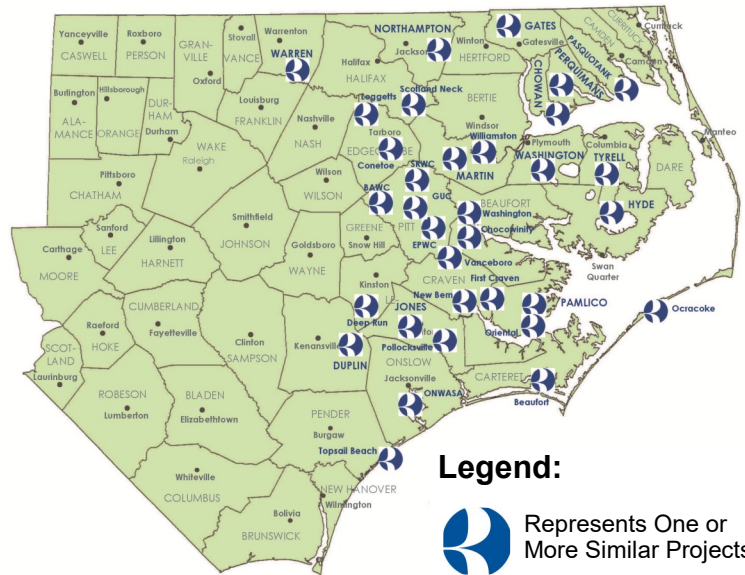
- Completed NASCAR Hall of Fame project that included full Level-B mapping and Level-A Test Holes of 2 square downtown Charlotte, NC city blocks which contained multiple highly sensitive fiber optic and electrical duct banks; City of Charlotte.
- Completed Level B mapping of the UNC-Charlotte central campus (164 acres). Over 34.5 miles of utilities were designated, surveyed and mapped.
- Completed Level A mapping for water meter verification project at the Town of Cary.
- Managed 5 mile Level A SUE Mapping for proposed SSFM along US-70 in Clayton, NC.
- Completed 3-mile Level B project of the Concord-Kannapolis Bypass Extension in Cabarrus County, NC; North Carolina DOT (TIP No. R-2246B).
- Completed over 50 NCDOT projects including road widening and bridge replacement.
- Completed projects for over 1,000 projects for the City of Charlotte, including road widening, drainage, and water replacement projects.
- Lead Technician on multiple Duke Energy Power Plant remediation projects.
- Completed multiple projects for the Air National Guard in Charlotte NC
- Completed & managed extensive Level A mapping for Facebook Data Center in Forest City, NC.
- Project Manager for over 1,000 private utility designating projects for various environmental companies that work for BP, ExxonMobil, Phillips 66, Conoco Phillips, Kinder Morgan, Plantation Pipeline and the states of North and South Carolina.

This page intentionally omitted.

3. Summary of Relevant Company Experience

Relevant Experience:

- Project Planning & Cost Estimating
- Topographic & Planimetric Surveys
- Preliminary Construction Plans
- Utility Coordination & Conflict Design
- Preparation of Final Construction Plans
- Preparation of Technical Specifications
- Cost Opinions
- Prepare Contract Documents
- List of Materials / Bid Schedule
- Regulatory Permitting Assistance
- Bidding & Contract Award Assistance
- Construction Administration
- Construction Observation
- Reproducible Record Drawings



Technical Capabilities

Rivers & Associates is a regional industry leader having played a significant role in planning, design and implementation of utility infrastructure throughout eastern North Carolina, including: water supply, pumping, treatment, storage & transmission/distribution; wastewater collection, pumping, transmission, treatment & disposal; drainage conveyance, pumping & attenuation systems; and natural gas storage and distribution. Our corporate experience includes numerous successful projects associated with modeling, planning, design and construction administration/observation of projects associated with pressurized utility pipelines.

Our engineering design experience includes trenchless technologies to cross utility mains under roadways and environmentally sensitive areas as well as utility coordination and conflict resolution design. Our Team is very knowledgeable of technologies available, methodologies and tasks required for such activities.

Similar Project Experience

For Greenville Utilities Commission (GUC), Rivers has designed over eighty miles of its gas distribution piping network including replacement mains and major distribution expansions in the Simpson, Eastern Pines and Winterville areas as well as in the Greenville Medical Park District.

This vast track record has allowed our staff to have a front row seat to observing the evolution of innovative technologies associated with these activities which is essential today for the successful and sustainable planning, funding, design and implementation of the proposed natural gas distribution improvements project for GUC.

In this section, brief summaries document a selection of Rivers' recent natural gas and other pressurized utility project experience.

VOA Site C ROAD GAS DISTRIBUTION ENHANCEMENTS Greenville Utilities Commission, Greenville, NC

Enhancements to the gas distribution system in the NC Hwy 43 service area were initiated to reinforce delivery of reliable gas service in a growing area. The project consisted of design and permitting of a natural gas main extension consisting of approximately 21,000 LF of 4-inch intermediate pressure medium-density polyethylene natural gas distribution main to loop the existing 4-inch gas main terminus on VOA Site C Road with the existing 4-inch gas main on Stantonsburg Road at its intersection with VOA Site C Road, thus providing an increased reliability of service without disruption for approximately 1,200 existing customers.

Rivers' Role

Prime Consultant

Owner Contact

Greenville Utilities Commission

Durk Tyson, P.E.

Gas Systems Engineer

Phone: (252) 551-2048

Email: tysonfd@guc.com

Rivers' Team Participants

Project Manager:	Fred Stowe, P.E.
Project Engineer:	Seth Anderson, P.E.
Survey Manager:	Patrick Hartman, PLS
Aerial Photogrammetry:	Mark Schall, PLS
CAD Designer :	Mike Luszcz
Wetland Scientist:	Paul Farley

The project included obtaining NCDOT approval to cross under the controlled access right-of-way of US Highway 264 beyond the footprint of the US 264 / VOA Site C Road overpass bridge structures. There were also crossing of various NCDOT secondary routes and privately-owned roadways intersecting with VOA Site C Road. The project required the crossing of Pine Log Branch adjoining a NCDOT culvert on VOA Site C Road immediately south of US Highway 264 right-of-way.

Rivers' services include aerial photogrammetry and base mapping provided by a sub-consultant, setting of aerial control panels, preliminary and final design consisting of preparation of final construction documents, wetland/stream delineation provided by a sub-consultant, easement mapping, and obtaining necessary permits for construction including NCDOT Encroachment Agreements and Sedimentation and Erosion Control Plan approval.

THOMAS LANGSTON ROAD GAS DISTRIBUTION ENHANCEMENTS

Greenville Utilities Commission, Greenville, NC

Enhancements to the gas distribution system in the southwest service area were initiated to reinforce delivery of reliable gas service in a growing residential area. The project consisted of design and permitting of a natural gas main extension consisting of approximately 14,200 LF of 8" medium-density polyethylene (PE) natural gas main pipeline installed by open trench method, 3,800 LF of 8" PE gas main pipeline installed by horizontal directional drilling under environmentally sensitive areas, 65 LF of 8" PE gas main pipeline installed via jack and bore 12" steel casing under NCDOT roadway, miscellaneous smaller diameter PE and steel piping interconnects, gate station interconnection and associated appurtenances along an existing transmission power line corridor from an existing gate station near US Highway 13 to NC Highway 11.

Rivers' services include aerial photogrammetry and base mapping provided by a sub-consultant, setting of aerial control panels, preliminary and final design consisting of preparation of final construction documents, wetland delineation provided by a sub-consultant, easement mapping, and obtaining necessary permits for construction including NCDOT Encroachment Agreements and Sedimentation and Erosion Control Plan approval.

Rivers' Role

Prime Consultant

Owner Contact

Greenville Utilities Commission

Durk Tyson, P.E.

Gas Systems Engineer

Phone: (252) 551-2048

Email: tysonfd@guc.com

Rivers' Team Participants

Project Manager:	Fred Stowe, P.E.
Project Engineer:	Seth Anderson, P.E.
Survey Manager:	Patrick Hartman, PLS
Aerial Photogrammetry:	Mark Schall, PLS
CAD Designer :	Mike Luszcz
Wetland Scientist:	Paul Farley

SOUTHWEST BYPASS NATURAL GAS MAIN RELOCATION

Greenville Utilities Commission, Greenville, NC

Driven by NCDOT's construction of the new southwest bypass of NC 11 around the municipalities of Ayden, Winterville and Greenville, Greenville Utilities Commission (GUC) determined a need to relocate natural gas mains on a new corridor parallel to and congruent with the new highway right-of-way. Rivers was engaged to provide final design and permitting services. The project consisted of relocation of approximately 8,900 LF of 8" steel natural gas pipeline and associated appurtenances including 1,125 LF of 8" steel natural gas pipeline installed by horizontal directional drilling. The base drawings utilized for design were the final approved construction drawings associated with NCDOT TIP Project No. R-2250 as prepared by Barnhill Contracting Co. and HDR Engineering, Inc.

Rivers' services include Final Design Phase Services consisting of preparation of final construction drawings generally in accordance with layout provided by GUC, and obtaining necessary permits for construction including NCDOT Encroachment Agreements and Sedimentation and Erosion Control Plan approval.

10TH STR. / GREENVILLE BLVD. GAS MAIN REPLACEMENT

Greenville Utilities Commission, Greenville, NC

This project for Greenville Utilities Commission (GUC) consisted of abandoning 225 LF of 6" steel gas main under Greenville Blvd. and installation of a new 8" PE gas main on a new alignment under Greenville Blvd, including 100 LF of 12" jack and bore steel casing, and approximately 200 LF 6" PE interconnecting piping.

Rivers' services include Design Survey, SUE potholing and Final Design Phase Services consisting of preparation of final construction drawings generally in accordance with layout provided by GUC, and obtaining NCDOT Encroachment Agreement.

Rivers' Role

Prime Consultant

Owner Contact

Greenville Utilities Commission

Durk Tyson, P.E.

Gas Systems Engineer

Phone: (252) 551-2048

Email: tysonfd@guc.com

Rivers' Team Participants

Project Manager:

Fred Stowe, P.E.

Project Engineer:

Seth Anderson, P.E.

CAD Designer :

Mike Luszc

Rivers' Role

Prime Consultant

Owner Contact

Greenville Utilities Commission

Durk Tyson, P.E.

Gas Systems Engineer

Phone: (252) 551-2048

Email: tysonfd@guc.com

Rivers' Team Participants

Project Manager:

Fred Stowe, P.E.

Project Engineer:

Seth Anderson, P.E.

Survey Manager:

Patrick Hartman, PLS

CAD Designer :

Mike Luszc

OLD RIVER ROAD NATURAL GAS MAIN RELOCATION Greenville Utilities Commission, Greenville, NC

Greenville Utilities Commission (GUC) determined to make improvements to its gas distribution system and engaged Rivers provide final design and permitting services. The project consisted of natural gas main extension consisting of approximately 10,000 LF of 8" PE and associated appurtenances along Old River Road (SR 1401), including design of three roadway crossing to be accomplished by directional bore or steel casing by jack and bore.

Rivers' services include Final Design Phase Services consisting of preparation of final construction drawings generally in accordance with layout provided by GUC, and obtaining necessary permits for construction including NCDOT Encroachment Plan approval.

Rivers' Role

Prime Consultant

Owner Contact

Greenville Utilities Commission

Durk Tyson, P.E.

Gas Systems Engineer

Phone: (252) 551-2048

Email: tysonfd@guc.com

Rivers' Team Participants

Project Manager:

Fred Stowe, P.E.

Project Engineer:

Seth Anderson, P.E.

Survey Manager:

Patrick Hartman, PLS

CAD Designer :

Mike Luszcz

Agreement and Sedimentation and Erosion Control

OLD PACTOLUS ROAD NATURAL GAS MAIN EXTENSION Greenville Utilities Commission, Greenville, NC

This project for Greenville Utilities Commission (GUC) consisted of approximately 10,400 LF of 6" PE gas main extension.

Rivers' services included limited surveys, design, preparation of construction drawings and details, erosion control and environmental permitting, and NCDOT encroachments permitting.

Rivers' Role

Prime Consultant

Owner Contact

Greenville Utilities Commission

Anthony Miller

Director of Gas Systems

Phone: (252) 551-1590

Email: milleral@guc.com

Rivers' Team Participants

Survey Manager:

Patrick Hartman, PLS

10TH STREET CONNECTOR (NCDOT TIP #U-3315) DRAINAGE IMPROVEMENTS & UTILITY RELOCATIONS Greenville Utilities Commission, Greenville, NC

This project funded by NCDOT with supplemental funding by the City of Greenville and GUC, included installation of a new multi-lane roadway corridor between the center city and the medical district including an elevated roadway crossing of Dickinson Avenue and CSX railroad.

In the role of drainage improvements and utility relocation designer, Rivers was responsible for the design of new and relocated infrastructure for water, sewer, drainage and natural gas distribution. Natural gas distribution relocation consisted of approximately 5,800 LF of 2"-8" PE and 500 LF of 8" steel gas distribution mains; various lateral & service reconnects; and associated appurtenances.

As part of a larger consultant team, Rivers services included horizontal/vertical control and design survey, property surveys, obscure area topographic survey, stormwater and wastewater surveys, initial right-of-way/easement staking for NCDOT acquisition/review with property owners, water/sewer/drainage/natural gas utility design, environmental permitting for water/sewer improvements, and assistance with railroad encroachment permitting.

OLD TAR ROAD NATURAL GAS MAIN EXTENSION Greenville Utilities Commission, Greenville, NC

This project for Greenville Utilities Commission (GUC) consisted of approximately 4,500 LF of 6" PE gas main extension including approximately 100 LF of dry bore installation under drives and roadways.

Rivers services included limited surveys, design, preparation of construction drawings and details, erosion control and environmental permitting, and NCDOT encroachments permitting.

Rivers' Role

Sub-Consultant

Prime Contact

Kimley-Horn Associates

Jeff Miller, P.E.

Phone: (919) 677-2175

Owner Contact

Greenville Utilities Commission

Anthony Miller

Director of Gas Systems

Phone: (252) 551-1590

Email: milleral@guc.com

Rivers' Team Participants

Project Manager:

Greg Churchill, P.E.

Survey Manager:

Patrick Hartman, PLS

Rivers' Role

Prime Consultant

Owner Contact

Greenville Utilities Commission

Anthony Miller

Director of Gas Systems

Phone: (252) 551-1590

Email: milleral@guc.com

Rivers' Team Participants

Survey Manager:

Patrick Hartman, PLS

OLD PACTOLUS RD., RAMS HORN RD., WHICHARD-CHERRY RD. NATURAL GAS MAIN EXTENSION Greenville Utilities Commission, Greenville, NC

This project for Greenville Utilities Commission (GUC) consisted of approximately 11,600 LF of 8" PE gas main extension including approximately 900 LF of horizontally drilled directional bore under creeks and roadways.

Rivers services included limited surveys, design, preparation of construction drawings and details, erosion control and environmental permitting, and NCDOT encroachments permitting.

Rivers' Role

Prime Consultant

Owner Contact

Greenville Utilities Commission

Anthony Miller

Director of Gas Systems

Phone: (252) 551-1590

Email: milleral@guc.com

Rivers' Team Participants

Survey Manager: Patrick Hartman, PLS

PITT STREET NATURAL GAS MAIN EXTENSION Greenville Utilities Commission, Greenville, NC

This project for Greenville Utilities Commission (GUC) consisted of approximately 750 LF of 2" PE gas main extension including approximately 400 LF installed by of horizontal directional drilling under CSX railroad and W. 14th Street.

Rivers' services included surveys, design, preparation of construction drawings and details.

Rivers' Role

Prime Consultant

Owner Contact

Greenville Utilities Commission

Anthony Miller

Director of Gas Systems

Phone: (252) 551-1590

Email: milleral@guc.com

Rivers' Team Participants

Survey Manager: Patrick Hartman, PLS

4. Sub-Consultants - Subsurface Utility Exploration (SUE)

Other professional service disciplines are provided through associate companies as required to ensure Rivers' team effectively and efficiently concentrates on services within its fields of expertise, while providing all necessary services to the client. There will likely be a need for subsurface utility exploration. Rivers has previously partnered with several SUE firms in past projects. For this project, Rivers is including the firm of Taylor, Wiseman & Taylor as a member of the proposed project team.

5. Hourly Rates of Personnel

<u>Hourly Rates Schedule</u> Rivers & Associates, Inc.	
Employee Classification	Hourly Rates
Principal	\$205
Project Manager	\$150 - \$200
Project Engineer	\$120 - \$185
Design Engineer	\$100 - \$110
Landscape Architect	\$115 - \$160
Landscape Designer	\$95 - \$120
Planner	\$85 - \$105
CAD Designer	\$90 - 140
CAD Technician	\$75 - \$85
Project Surveyor	\$90 - \$135
Party Chief	\$65 - \$120
Surveyor Technician	\$55 - \$75
1-Man Robotic	\$110 - \$150
Resident Project Rep.	\$70 - \$115
Administrative Assistant	\$70 - \$85
Intern Tech	\$45
Sub-Consultants and Fees	1.15 x Cost
Travel	Current IRS Rate
Miscellaneous Expenses	Cost
Rates are effective through June 30, 2026. Subject to annual adjustment thereafter.	

6. Location of Offices & Key Project Staff

Offices From Where Work Will Be Performed

Rivers & Associates, Inc.

Rivers' staff to be assigned to the Greenville Utilities Commission (GUC) Gas System Improvement Project are all located in our Greenville, NC corporate office and are available to begin project tasks upon execution of a professional services agreement.

Taylor, Wiseman & Taylor

Taylor, Wiseman & Taylor (TWT) staff member to be assigned to the project work from the Apex, NC office and are available to begin project tasks upon execution of a professional services sub-agreement.

7. Project Schedule

Tentative Project Schedule

A tentative project schedule is illustrated on the following page. Many factors can influence the success of this schedule, including factors beyond the control of the GUC and/or Rivers. Specific dates will depend on when authorization to proceed is issued for the various phases of service. However, Rivers' Project Team is prepared to begin immediately upon receipt of such authorization.

PROJECT PHASES & GENERAL TASKS	MONTHS													
	1	2	3	4	5	6	7	8	9	10	11	12	13	14
PRELIMINARY DESIGN PHASE														
Kick-Off & Reconnaissance														
Kickoff Meeting w/ Owner & Stakeholders														
On-Site Corridor Reconnaissance														
Develop Pipeline Alignment Schematic Plan														
Review Schematic Pipeline Alignment with Owner														
Survey														
Set Control & Conduct Survey														
Develop Base Mapping From Survey														
Update Base Mapping From Field Surveys														
Preliminary Design														
Identify Critical Areas & Initiate Utility Coordination Activities														
Conduct Field Survey for Critical Areas														
Develop Preliminary Pipeline Plan Sheets														
Determine Preliminary Construction Detail Requirements														
Develop Preliminary Technical Specification Outline														
Develop Preliminary Opinion of Probable Cost														
Review Preliminary Design Plan & Cost Opinion w/ Owner														
Incorporate Comments Into Preliminary Design Development Plan														
FINAL DESIGN & PERMITTING PHASE														
Incorporate Critical Area Design & Utility Conflict Design														
Finalize Pipeline Plan / Profile Drawings														
Finalize Construction Level Details														
Prepare Technical Specifications / Special Provisions														
Develop List of Materials & Bid Schedule, Estimate Quantities														
Update Preliminary Opinion of Probable Cost														
Prepare Contract Documents														
Review Final Design/Contract Documents & Cost Opinion w/ Owner														
Develop & Assist Owner Submit Permit & Encroachment Applications														
Anticipated Permit / Encroachment Acquisition Process (NCDEQ, NCDOT, etc)														
BIDDING & CONSTRUCTION PHASES														
Bid Advertisement, Pre-Bid Meeting & Bid Opening														
Construction Contract Award, Execute Contract & Notice to Proceed														
Construction Contract Period (estimated at 6 months)														
Record Drawings (2 weeks)														

This page intentionally omitted.

8. Special Considerations

Project Approach

Preliminary Design

During preliminary design, critical areas for utility coordination will be defined as well as interconnection with the existing gas main.

While the schematic alignment plan will indicate a schematic alignment for the new gas main, the details to best accomplish this will be defined during the Preliminary Design Phase.

The need for specific details will be identified during the Preliminary Design Phase. An outline of technical specification requirements will be developed along with a preliminary opinion of probable cost for project construction.

Utility coordination efforts will be completed during the Preliminary Design Phase, as well as site specific surveys for identified critical areas.

Once the new pipeline alignments have been finalized, the need for subsurface utility exploration and geotechnical investigations will be discussed with the Owner for coordination of efforts to accomplish required tasks in a timely manner. Rivers will facilitate these efforts as a part of our scope of services.

The Preliminary Design Phase documents will be reviewed with GUC, incorporating comments from that review prior to initiating the Final Design Phase and easement survey/mapping activities.

Interconnection with Existing Facilities

Prior to tying-in the new lines to the existing system, the lines will be tested, purged of air and filled with natural gas via a service tee connection on the new main and service tee purge fittings at terminations of the stub-outs to the existing distribution system. The Project Team will work with GUC to ensure that valves are specified to that facilitate this operation and future operational flexibility of the in-service distribution piping.

Final Design & Permitting

The designs for critical areas identified during the Preliminary Design Phase will be completed, including

preparation of plan/profile details to illustrate engineered solutions to any identified utility conflicts, roadway crossings, railroad crossings, stream/wetland crossings, etc.

All construction level details will be finalized, including those associated with acquiring environmental and regulatory approval such as erosion and sedimentation control, stormwater and traffic management/encroachment permits.

Technical specifications defining work requirements, materials and execution of the work will be prepared as well as contract documents including a take-off of estimated quantities for construction and establishment of a bill of materials for procurement by GUC.

The preliminary opinion of probable construction cost will be updated during this phase prior to delivering all documents to the Owner for his review.

Rivers' Project Team will review design documents with GUC staff at appropriate intervals throughout this phase to obtain input and preferences for a successful project.

The final plans, specifications, easement documents and updated cost opinion will be reviewed with GUC to incorporate comments/revisions into project documents prior to final development of regulatory and environmental permit application documents for the Owner's execution.

Rivers will submit regulatory and environmental permit applications for approval and assist GUC in responding to any comments from reviews in order to secure the required permits and encroachments.

Bidding & Construction Phase

As desired, Rivers' Project Team will assist GUC with the advertisement of the project for the receipt of publicly opened bids in accordance with the North Carolina General Statutes and facilitate all tasks required throughout the bid period. Those tasks typically include:

- a. Assist with placement of advertisement in various media and plan rooms for solicitation of bids.
- b. Attend & moderate pre-bid conference.
- c. Issue addenda as appropriate.
- d. Conduct bid opening.
- e. Evaluate bids received and make recommendation

for construction contract award.

- f. Provide assistance in award and execution of a construction contract.

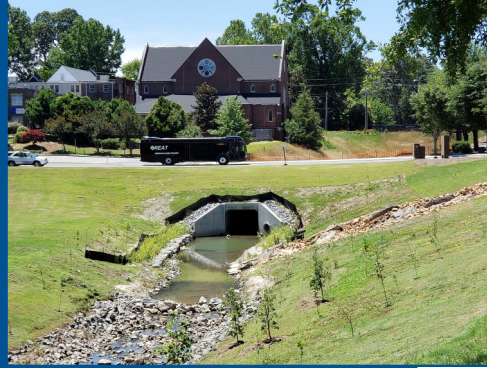
Once a construction contract has been awarded by GUC and executed between GUC and the Contractor, Rivers can undertake various duties to administer the construction contract on the Owner's behalf, including on-site construction observation. Those tasks typically include:

- a. Conduct preconstruction conference.
- b. Provide routine construction contract administration.
- c. Conduct shop drawing review.
- d. Perform at least monthly site visits to observe progress and quality of the work.
- e. Provide interpretation of the contract documents, plans and specifications.
- f. Provide determinations of whether the work is in substantial accordance with the contract documents, plans and specifications.
- g. Develop and process field orders, work change directives, and construction contract change orders.
- h. Review and process contractor's applications for payment.
- i. Provide full-time (as negotiated) on-site construction observation.
- j. Provide supervision of construction observation.
- k. Conduct Final Inspections to insure substantial compliance with contract documents, plans and specifications, and permits.
- l. Issue Certificate of Substantial Completion.
- m. Provide written approval of final payments to contractors.
- n. Prepare record drawings from Contractor furnished data in AutoCad format.

9. Professional References

Rivers' Client Base Consists of:

- Municipalities
- Counties
- Sanitary Districts
- Water & Sewer Districts
- Water Authorities
- Non-Profit Corporations
- State Government
- Industry
- Private Institutions
- Private Developers



*Town Creek Culvert
Greenville, NC*

*Wastewater Treatment Plant
New Bern, NC*



Mr. Donovan Willis
Public Utilities Director
Town of Beaufort, NC
d.willis@beaufortnc.org
Ph: (252) 732-0153

Mr. Daniel Elks
Public Works Director
Town of Chocowinity, NC
delks@chocowinitync.org
(252) 946-6568

Mr. David Tawes, ORC
Water Department Director
Chowan County
david.tawes@chowan.nc.us
Ph: (252) 482-2627

Mr. Barry Sutton
Manager
Eastern Pines Regional Water Corp.
bsutton@epwc.org
Ph: (252) 752-7420

Ms. Lisa Kirby, P.E.
City Engineer
City of Greenville, NC
lkirby@greenvillenc.gov
Ph: (252) 329-4683

Mr. David Hemenway
WTP ORC
City of Havelock, NC
dhemenway@havelocknc.us
Ph: (252) 444-6420

Ms. Kim Rineer, P.E.
Contracts Manager
Johnston County, NC
kim.rineer@johnstonnc.com
Ph: (919) 989-5725

Mr. Jordan Hughes, P.E.
City Engineer
City of New Bern, NC
hughesj@newbernnc.gov
Ph: (252) 902-3175

Mr. Tim Corley, P.E.
County Engineer
Pitt County, NC
tim.corley@pittcountync.gov
Ph: (252) 639-7527

Mr. Johnathan Jarman
Public Works Director
Town of Richlands, NC
publicworks@richlandscnc.gov
Ph: (910)324-3301

Mr. Kurt Polzer
Public Services Supervisor
Town of Topsail Beach, NC
publicservices@topsailbeach.org
Ph: (910) 328-3271

Mr. David Clegg
County Manager
Tyrrell County, NC
dclegg@tyrrellcounty.net
Ph: (252) 218-9471

Mr. Macon Robertson
Interim Public Works Dir.
Warren County, NC
maconrobertson@warrencountync.gov
Ph: (252) 257-3645

Ms. Hope Woolard
Public Works Director
City of Washington, NC
hwoolard@washingtonnc.gov
Ph: (252) 975-9332

Mr. Doremus Luton
Public Utilities Director
Washington County, NC
dluton@washconcc.org
Ph: (252) 325-6707

Mr. Stacy Stalls
Public Works Director
Town of Williamston, NC
stacystalls@townofwilliamston.com
Ph: (252) 792-1024

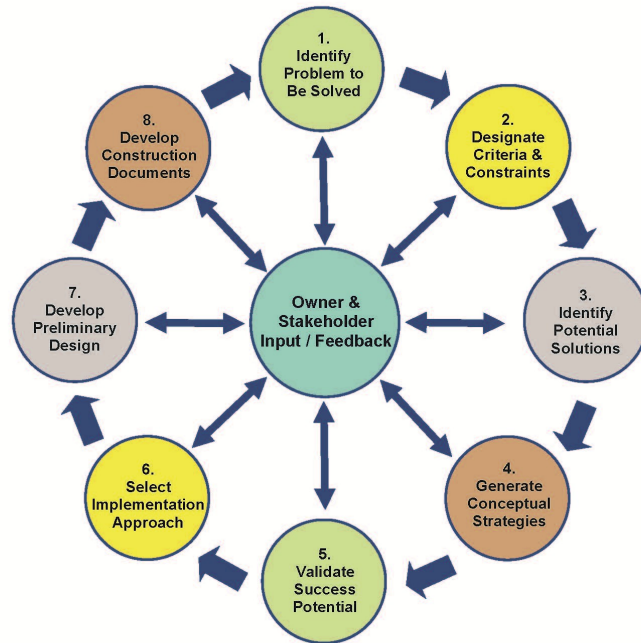
Anthony Bowers
Asst. Town Manager
Town of Winterville, NC
anthony.bowers@wintervillenc.com
Ph: (252) 215-2428

This page intentionally omitted.

10. Other Considerations

- Proximity to Project Site
- Geographic Familiarity
- System Familiarity
- Responsiveness to Client Needs
- Quality Control & Assurance Through Communication
- Cost Control
- Project Schedule Maintenance
- Protection Against Defects / Deficiencies

Rivers and Associates Planning & Design Process



Proximity to Project Site

Rivers prides itself on the fact that 80% of our business is repeat business from long standing clients. This yields long-standing relationships based upon mutual faith and trust.

Our primary target market area is eastern North Carolina encompassing up to a three-hour travel radius. As such, we have completed project assignments literally from the South Carolina state line to the Virginia state line.

Rivers' Project Team staff for the Greenville Utilities Commission project are all based in our Greenville, NC office. Therefore, we are easily accessible to not only the project, but to Greenville Utilities Commission (GUC) staff and regulatory stakeholders.

Geographic Familiarity

Due to our experience with infrastructure projects across eastern North Carolina including in Greenville and Pitt County, Rivers brings a thorough understanding of the geophysical and environmental characteristics of the area, allowing us to anticipate conditions that potentially impact construction. As a result, we

are able to optimize planning and design to mitigate those circumstances.

Located in eastern North Carolina since 1918, and having designed projects throughout the region, Rivers' staff maintains strong relationships with State and Federal regulatory agency personnel assigned to the eastern region of the state, including NCDEQ, NCDOT, USAC-OE, etc. Engineering projects throughout the eastern region of the state, we also maintain working relationships with public-owned, private-owned, and publicly traded power company and telecommunications personnel. We are accustomed to working with these individuals to identify project strategies to achieve regulatory and coordination requirements while assisting our client in meeting project goals in a cost-effective manner. We also have significant experience obtaining concurrence from railroad companies, including CSX, with regard to utility crossings of their property/tracks.

Working with multiple local government clients throughout eastern North Carolina, including Greenville Utilities Commission and other municipalities and counties, Rivers' staff have the familiarity of working with numerous utility construction contractors that typically provide services in our geographical region. This familiarity facilitates a positive working relationship with contractors, who recognize and generally appreciate

Rivers' intention to fairly and equitably advocate for our client to receive the product which has been specified, bid and contracted. As a result, Rivers' staff regularly consults with these contractors during project design as to their opinion concerning the best practice methodology with which to accomplish certain construction tasks.

System Familiarity

For many years, Rivers & Associates has maintained a positive working relationship with Greenville Utilities Commission (GUC) and the engineering staffs of its gas and water resources departments. Our firm has planned and designed many projects for GUC, including many miles of gas distribution improvements. Our working knowledge of the requirements, standards and specifications of GUC for gas projects is well documented through successful projects.

Our assembled team, has worked on a number of projects for the City of Greenville and Greenville Utilities Commission. Expectations are high for efficiently and effectively completing work tasks in an expeditious manner for a successful project. Relationships created through past endeavors will benefit the team in a collaborative effort to accomplish its goals as well as GUC to successfully complete the proposed project.

Responsiveness to Client Needs

Rivers attributes much of our success to our firm's overall approach to project and client management. We consider ourselves an extension of our client's staff. Our staff strives to understand the special needs and goals of each individual client by developing strong relationships within each organization.

Our project management philosophy incorporates the establishment of the needs of the client at the pinnacle of our priorities. Listening to the client is the key to understanding his needs. Our project management plan facilitates a practical approach that blends conservative yet progressive concepts with creative initiatives.

Quality Control & Assurance Through Communication

Internal quality control and assurance will be through Rivers' standard practice of peer review and discussion. Each project includes a work plan to outline the required tasks, responsible party, sequence and schedule for achieving successful completion. The Project Manager

is responsible for ensuring that team members complete their assigned tasks in a timely manner. Project teams meet at least weekly (more often as necessary) to review the progress of the project, obstacles encountered, resolutions required, as well as progressive tasks next to be implemented. This is done to ensure that research, analysis, computations, design and production of deliverable documents proceed as smoothly and efficiently as possible toward project completion. Additionally, coordination, meetings and periodic review of sub-consultants' work is performed by qualified Rivers' staff under the direction of the Project Manager to ensure understanding and compatibility with project goals and project schedule. Should additional resources be required to maintain a project's progress, the Project Manager will identify this requirement during the in-house team weekly meetings and make necessary priority adjustments and/or acquire additional resources with which to otherwise overcome the obstacle. Similarly, the Project Manager will work with sub-consultants to secure timely completion of their assigned tasks.

Internal peer review is utilized to ensure quality control for computations, design, and preparation of project documents. Registered Engineers will directly supervise all work produced as well as review and seal the completed product.

External agency review helps to ensure suitability for implementation. One method of external quality control and assurance will be accomplished by consistent communication and meetings with Greenville Utilities Commission's (GUC) assigned Project Manager and other Gas Department representatives. Owner input will be routinely requested from the conception of project scope through completion of the project. Owner participation in the design process and concurrence with final recommendations is vital to the success of the project.

Rivers approach to planning, design and construction administration includes involving appropriate members of the Owner's staff in the project as much as the Owner is willing to allow and participate. Ultimately, the GUC Project Manager and the GUC Director of Gas Systems are the individuals who will oversee the completion of successful project delivery for operations and maintenance of the new facilities by GUC staff while the CEO and CFO and will work with the Director of Gas Systems for the implementation of finance plans for construction as well as annual O&M budgeting considerations. Those individuals' opinions of the final product

will either positively or negatively impact River's reputation with Greenville Utilities Commission and within all of North Carolina.

As such, we covet the Owner's opinion or preference with regard to certain design decisions. We will advise the Owner of the pros and cons of available options. If we feel strongly that a given solution is superior to others, we will advise the Owner of that. However, many decisions are simply based on preference. We believe that the final design should reflect the Owner's preferences whenever practical. Also, maintenance personnel will be attuned to O&M requirements and costs that may impact the plan, and can offer insights into potential cost savings and/or benefits for the Owner.

Additional external agency review, as applicable, will be provided by routine communication and meetings with representatives of regulatory agencies that will be requested to issue appropriate environmental/regulatory permits for project development. Such input during the course of preliminary design helps to ensure suitability for implementation and expedite the permitting process once formal applications for plan approval and authorization to construct are submitted.

Cost Control

Rivers and GUC are mutually interested in completing projects within budget. The best tools for accomplishing this goal are a well-defined scope of work, clear communication, sound cost estimation, and clearly defined lines of responsibility between the Owner, Contractor and Engineer.

Rivers has developed proven methodologies and a good track record for estimating the cost of work. The first step in controlling the project budget is to prepare a sound proposed budget in relation to the proposed project. As implementation of the project evolves into design development phases, a design development memo will include our comments as to the adequacy of the original project budget and recommendations, if necessary, for means of overcoming obstacles, decreasing the construction cost or the need for an increase in the project funding to achieve the GUC project goals.

Throughout the design development process, maintaining a detailed takeoff of construction items and updating costs as necessary are key steps to providing a reliable

cost opinion. GUC will be notified at any time that the cost opinion for the project exceeds the funding. Prior to bidding, a final construction cost opinion will be prepared for presentation to GUC as part of the final design.

In order for the Owner to obtain competitive bids, we strive to provide our clients with clear, concise, correct and well coordinated Construction Documents. Well prepared project documents are the best tool for obtaining a competitive and fair bid price.

We utilize bid tabulation data maintained for all our projects as a cost estimating tool. Additionally, we maintain good working relationships with material suppliers, contractors and equipment manufacturers' representatives. These resources are utilized as necessary to prepare construction and project cost estimates.

Rivers makes a concerted effort to include the Owner in the design and decision-making process. Each design element has associated benefits and costs. The Owner's preference has a direct impact on the ultimate project cost. Occasionally, alternative bid items are included for specific items of equipment/materials. This provides additional choices to the Owner that contribute to the final construction/project cost.

It should be noted, that while we make every effort to provide reliable construction cost opinions, the consultant cannot assure that the project budget will not be exceeded in the final public bidding process as external factors can create uncontrollable influences.

In order to control the scheduling and cost of engineering, Rivers has assembled an experienced and technically qualified team that will perform their responsibilities in a timely and efficient manner. Our understanding of the technical needs and permitting process will afford GUC the most cost-effective solution to the project.

To avoid escalation of the cost of the work, the Owner and Engineer need to share and understand each other's mutual expectations, establish a clearly defined scope of work, and designate a single point of contact for communications. Each party should encourage open and frequent communication with expedient responses or decisions to inquiries or requests for information.

Project Schedule Maintenance

In addition to a well-defined budget, each project should include a mutually agreeable schedule. Project status

should be regularly checked against the schedule to determine whether the progress is acceptable or whether additional resources are required to complete the work on time.

For most projects, periodic design review meetings are scheduled with the Owner at which project status is discussed among other items. This provides an opportunity for the Owner to stay informed of the progress to date, and offer input into whether adjustments are required.

During weekly team meetings (more frequently as required), the schedule is reviewed to ensure that sufficient progress is being made and that potential delays are addressed expeditiously.

In order to control the timeframe for performance of the work, Rivers will propose a reasonable schedule for each project, and will provide sufficient staff to complete the work within the established timeframe. Supplemental staff can be made available as needed.

Protection Against Defects / Deficiencies

One of the principal roles of the Designer is to ensure that the end product performs as intended. Numerous opportunities exist for circumstances, events, misunderstandings or mistakes to jeopardize the performance of the completed work. The following steps are integrated into Rivers' procedures to minimize defects and deficiencies during construction of the project:

- Ensure clear understanding by Owner and Engineer of the project goals and operations requirements/performance of all specified materials and equipment.
- Clearly define and document project and performance requirements during the preparation of plans and specifications to assist Contractor and Supplier understanding.
- If contracted for construction phase services, confirm that any proposed "substitute" or "or equal" items meet plan and specification requirements.
- If contracted for construction phase services, carefully review shop drawing submittals for acceptability.
- If contracted for construction phase services, provide well-qualified construction administrative staff with extensive experience in work of the type being performed.
- If contracted for construction phase services, con-

firm acceptable construction in substantial accordance with contract documents.

- If contracted for construction phase services, confirm contract requirements for warranty, certifications, etc. are fulfilled.

RFQ Acknowledgement and Signature Form

RFQ No.: 25-59, Engineering Services for 2025 DIMP Gas Distribution System Improvements

The undersigned having carefully examined the location of the proposed work, the local conditions of the place where the work is to be done, the Invitation, the General Conditions, the Specifications and all of the documents for this project, proposes to enter into a contract with Greenville Utilities Commission in Greenville North Carolina perform the work listed in this RFQ, including all of its component parts, and to furnish any and all required labor, materials, equipment, insurance, bonding, taxes, transportation and services required for this project in strict conformity with the plans and specifications prepared, including any Addenda, within the time specified.

Addendum Acknowledgement:

The following addendum (addenda) is (are) acknowledged in this RFQ: No Addendum issued

Acknowledgement and Signature:

1. No Proposal is valid unless signed in ink by the person authorized to make the proposal.
2. I have carefully read, understand and agree to the terms and conditions on all pages of this RFQ. The undersigned agrees to furnish the services stipulated in this RFQ.

Respondent's Name and Title:

Company Name: Rivers & Associates, Inc.

Address: 107 E. 2nd Street

Telephone: 252-752-4135 Fax: 252-752-3974

Email: gchurchill@riversandassociates.com Cell Number: 252-341-0922

Contractor License # (if applicable): NC-BELS# F-0334 Expiration Date: 6/30/2026

Federal Tax Identification Number: 56-0705765

Authorized Signature:  Date: 10-13-25

E-Verify Form

Letter of Compliance to E-Verify for Greenville Utilities Commission. Please complete the form below.

1. I have submitted a bid for contract or desire to enter into a contract with the Greenville Utilities Commission;
2. As part of my duties and responsibilities pursuant to said bid and/or contract, I affirm that I am aware of and in compliance with the requirements of E-Verify, Article 2 of Chapter 64 of the North Carolina General Statutes, to include (mark which applies):
3. X After hiring an employee to work in the United States I verify the work authorization of said employee through E-Verify and retain the record of the verification of work authorization while the employee is employed and for one year thereafter; or
4. I employ less than twenty-five (25) employees in the State of North Carolina.
5. As part of my duties and responsibilities pursuant to said bid and/or contract, I affirm that to the best of my knowledge and subcontractors employed as a part of this bid and/or contract, are in compliance with the requirements of E-Verify, Article 2 of Chapter 64 of the North Carolina General Statutes, to include (mark which applies):
6. X After hiring an employee to work in the United States the subcontractor verifies the work authorization of said employee through E-Verify and retains the record of the verification of work authorization while the employee is employed and for one year thereafter; or
7. Employ less than twenty-five (25) employees in the State of North Carolina.

Specify subcontractor: Taylor, Wiseman & Taylor

 Rivers & Associates, Inc. (Company Name)

By: Gregory J. Churchill, P.E. (Typed Name)

  (Authorized Signatory)

 President (Title)

 10-13-25 (Date)

It is certified that this proposal is made in good faith and without collusion or connection with any other person bidding on the same above listed items. It is also certified that this proposal is made in good faith and without collusion or connection with any GUC employee(s).

Certified check or cash for N/A or bid bond for N/A attached.

Firm Name: Rivers & Associates, Inc. Phone: ()

Address: 107 E. 2nd Street

City Greenville State NC Zip Code 27858

Fax (252) 752-3974 E-mail gchurchill@riversandassociates.com

Authorized Official Gregory J. Churchill, P.E. Title President

Typed Name

Gregory J. Churchill

Date 10-13-25

Signature